

## FGF-6 Polyclonal Antibody

### Description

<b>Product type</b>	Primary Antibody
<b>Code</b>	BT-AP03218
<b>Host</b>	Rabbit
<b>Isotype</b>	IgG
<b>Size</b>	20ul, 50ul, 100ul
<b>Immunogen</b>	The antiserum was produced against synthesized peptide derived from the C-terminal region of human FGF6. AA range:159-208
<b>Mol wt</b>	22905
<b>Species reactivity</b>	Human, Mouse, Rat
<b>Clonality</b>	Polyclonal
<b>Recommended application</b>	WB, ELISA
<b>Concentration</b>	1 mg/ml
<b>Full name</b>	FGF-6 Antibody
<b>Synonyms</b>	FGF6; HST2; HSTF2; Fibroblast growth factor 6; FGF-6; Heparin secretory-transforming protein 2; HST-2; HSTF-2; Heparin-binding growth factor 6; HBGF-6

This product is for research use only, not for use in human, therapeutic or diagnostic procedure.

### Background

Fibroblast growth factor 6 encoded by FGF6 is a member of the fibroblast growth factor (FGF) family. FGF family members possess broad mitogenic and cell survival activities, and are involved in a variety of biological processes, including embryonic development, cell growth, morphogenesis, tissue repair, tumor growth and invasion. This gene displayed oncogenic transforming activity when transfected into mammalian cells. The mouse homolog of this gene exhibits a restricted expression profile predominantly in the myogenic lineage, which suggested a role in muscle regeneration or differentiation.

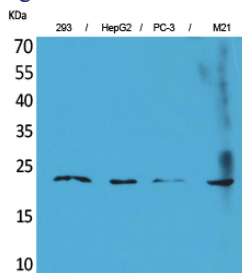
### Recommended Dilution

WB: 1: 500 - 1: 2000

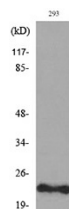
ELISA: 1: 20000

Not yet tested in other applications.

### Images



Western Blot analysis of 293, HepG2, PC-3, M21 cells using FGF-6 Polyclonal Antibody. Secondary antibody was diluted at 1:20000



Western blot analysis of lysate from 293 cells, using FGF6 Antibody.

## Storage

-20°C for one year

501 Changsheng S Rd, Nanhu Dist, Jiaxing, Zhejiang, China

Tel: 86 21 31007137 | E-mail: [save@bt-laboratory.com](mailto:save@bt-laboratory.com) | [www.bt-laboratory.com](http://www.bt-laboratory.com)