

Fgl2 Polyclonal Antibody

Description

Product type	Primary Antibody
Code	BT-AP03229
Host	Rabbit
Isotype	IgG
Size	20ul, 50ul, 100ul
Immunogen	The antiserum was produced against synthesized peptide derived from human Fgl2. AA range:38-87
Mol wt	50229
Species reactivity	Human
Clonality	Polyclonal
Recommended application	WB, ELISA
Concentration	1 mg/ml
Full name	Fgl2 Antibody
Synonyms	FGL2; Fibroleukin; Fibrinogen-like protein 2; pT49

This product is for research use only, not for use in human, therapeutic or diagnostic procedure.

Background

Fibroleukin encoded by FGL2 is a secreted protein that is similar to the beta- and gamma-chains of fibrinogen. The carboxyl-terminus of the encoded protein consists of the fibrinogen-related domains (FRED). The encoded protein forms a tetrameric complex which is stabilized by interchain disulfide bonds. This protein may play a role in physiologic functions at mucosal sites.

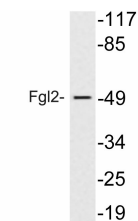
Recommended Dilution

WB: 1: 500 - 1: 2000

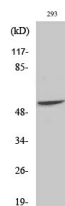
ELISA: 1: 10000

Not yet tested in other applications.

Images



Western blot analysis of lysate from 293 cells treated with insulin, using Fgl2 antibody.



Western Blot analysis of various cells using Fgl2 Polyclonal Antibody

Storage

-20°C for one year

