

KBTBA Rabbit Polyclonal Antibody

Description

Product type	Primary Antibody
Code	BT-AP03233
Host	Rabbit
Isotype	IgG
Size	100ul, 50ul, 20ul
Immunogen	Synthesized peptide derived from human KBTBA
Mol wt	66660
Species reactivity	Human, Rat
Clonality	Polyclonal
Recommended application	WB
Concentration	1 mg/ml
Full name	KBTBA
Synonyms	KBTBA

This product is for research use only, not for use in human, therapeutic or diagnostic procedure.

Background

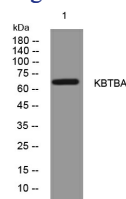
This gene is a member of the kelch-like family. The encoded protein contains a BACK domain| a BTB/POZ domain| and 5 Kelch repeats. This protein is thought to function in skeletal muscle development and maintenance. Mutations in this gene have been associated with nemaline myopathy (NM) a rare congenital muscle disorder.

Recommended Dilution

WB: 1: 500 - 1: 2000

Not yet tested in other applications.

Images



Western blot analysis of lysates from HCT116 cells, primary antibody was diluted at 1:1000, 4°C overnight

Storage

-20°C for 1 year

501 Changsheng S Rd, Nanhu Dist, Jiaxing, Zhejiang, China

Tel: 86 21 31007137 | E-mail: save@bt-laboratory.com | www.bt-laboratory.com