

KCC2G Rabbit Polyclonal Antibody

Description

Product type	Primary Antibody
Code	BT-AP03235
Host	Rabbit
Isotype	IgG
Size	100ul, 50ul, 20ul
Immunogen	Synthesized peptide derived from human KCC2G
Mol wt	61380
Species reactivity	Human, Mouse, Rat
Clonality	Polyclonal
Recommended application	WB
Concentration	1 mg/ml
Full name	KCC2G
Synonyms	KCC2G

This product is for research use only, not for use in human, therapeutic or diagnostic procedure.

Background

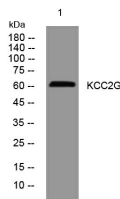
The product of this gene is one of the four subunits of an enzyme which belongs to the serine/threonine protein kinase family| and to the Ca(2+)/calmodulin-dependent protein kinase subfamily. Calcium signaling is crucial for several aspects of plasticity at glutamatergic synapses. In mammalian cells the enzyme is composed of four different chains: alpha| beta| gamma| and delta. The product of this gene is a gamma chain. Many alternatively spliced transcripts encoding different isoforms have been described but the full-length nature of all the variants has not been determined.

Recommended Dilution

WB: 1: 500 - 1: 2000

Not yet tested in other applications.

Images



Western blot analysis of lysates from SW480 cells, primary antibody was diluted at 1:1000, 4°C overnight

Storage

-20°C for 1 year