

Fibulin-3 Polyclonal Antibody

Description

Product type	Primary Antibody
Code	BT-AP03240
Host	Rabbit
Isotype	IgG
Size	20ul, 50ul, 100ul
Immunogen	The antiserum was produced against synthesized peptide derived from human EFEMP1. AA range:111-160
Mol wt	54641
Species reactivity	Human, Mouse, Rat
Clonality	Polyclonal
Recommended application	WB, IHC-p, ELISA
Concentration	1 mg/ml
Full name	Fibulin-3 Antibody
Synonyms	EFEMP1; FBLN3; FBNL; EGF-containing fibulin-like extracellular matrix protein 1; Extracellular protein S1-5; Fibrillin-like protein; Fibulin-3; FIBL-3

This product is for research use only, not for use in human, therapeutic or diagnostic procedure.

Background

EFEMP1 encodes a member of the fibulin family of extracellular matrix glycoproteins. Like all members of this family, the EGF containing fibulin like extracellular matrix protein 1 contains tandemly repeated epidermal growth factor-like repeats followed by a C-terminus fibulin-type domain. This gene is upregulated in malignant gliomas and may play a role in the aggressive nature of these tumors. Mutations in this gene are associated with Doyme honeycomb retinal dystrophy. Alternatively spliced transcript variants that encode the same protein have been described.

Recommended Dilution

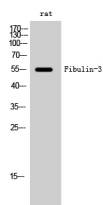
WB: 1: 500 - 1: 2000

IHC: 1: 100 - 1: 300

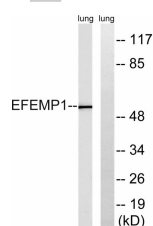
ELISA: 1: 10000

Not yet tested in other applications.

Images



Western Blot analysis of rat cells using Fibulin-3 Polyclonal Antibody



Western blot analysis of lysates from rat lung, using EFEMP1 Antibody. The lane on the right is blocked with the synthesized peptide.

Storage

-20°C for one year

501 Changsheng S Rd, Nanhu Dist, Jiaxing, Zhejiang, China

Tel: 86 21 31007137 | E-mail: save@bt-laboratory.com | www.bt-laboratory.com