

Fibulin-4 Polyclonal Antibody

Description

Product type	Primary Antibody
Code	BT-AP03241
Host	Rabbit
Isotype	IgG
Size	20ul, 50ul, 100ul
Immunogen	The antiserum was produced against synthesized peptide derived from human EFEMP2. AA range:91-140
Mol wt	49405
Species reactivity	Human
Clonality	Polyclonal
Recommended application	WB, IHC-p, IF, ELISA
Concentration	1 mg/ml
Full name	Fibulin-4 Antibody
Synonyms	EFEMP2; FBLN4; EGF-containing fibulin-like extracellular matrix protein 2; Fibulin-4; FIBL-4; Protein UPH1

This product is for research use only, not for use in human, therapeutic or diagnostic procedure.

Background

A large number of extracellular matrix proteins have been found to contain variations of the epidermal growth factor (EGF) domain and have been implicated in functions as diverse as blood coagulation, activation of complement and determination of cell fate during development. The EGF containing fibulin like extracellular matrix protein 2 encoded by EFEMP2 contains four EGF2 domains and six calcium-binding EGF2 domains. This gene is necessary for elastic fiber formation and connective tissue development. Defects in this gene are cause of an autosomal recessive cutis laxa syndrome. Alternatively spliced transcript variants have been identified for this gene.

Recommended Dilution

WB: 1: 500 - 1: 2000

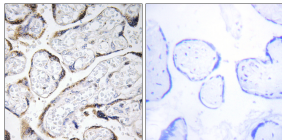
IHC: 1: 100 - 1: 300

IF: 1: 200 - 1: 1000

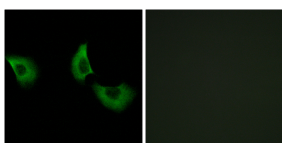
ELISA: 1: 10000

Not yet tested in other applications.

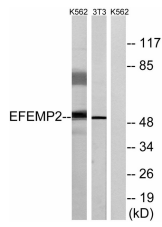
Images



Immunohistochemistry analysis of paraffin-embedded human placenta tissue, using EFEMP2 Antibody. The picture on the right is blocked with the synthesized peptide.



Immunofluorescence analysis of A549 cells, using EFEMP2 Antibody. The picture on the right is blocked with the synthesized peptide.



Western blot analysis of lysates from K562 and NIH/3T3 cells, using EFEMP2 Antibody. The lane on the right is blocked with the synthesized peptide.

Storage

-20°C for one year

501 Changsheng S Rd, Nanhu Dist, Jiaxing, Zhejiang, China

Tel: 86 21 31007137 | E-mail: save@bt-laboratory.com | www.bt-laboratory.com