

Filamin 1 Polyclonal Antibody

Description

Product type	Primary Antibody
Code	BT-AP03246
Host	Rabbit
Isotype	IgG
Size	20ul, 50ul, 100ul
Immunogen	The antiserum was produced against synthesized peptide derived from human Filamin A. AA range:2121-2170
Mol wt	280608
Species reactivity	Human, Mouse, Rat
Clonality	Polyclonal
Recommended application	WB, IHC-p, ELISA
Concentration	1 mg/ml
Full name	Filamin 1 Antibody
Synonyms	FLNA; FLN; FLN1; Filamin-A; FLN-A; Actin-binding protein 280; ABP-280; Alpha-filamin; Endothelial actin-binding protein; Filamin-1; Non-muscle filamin

This product is for research use only, not for use in human, therapeutic or diagnostic procedure.

Background

Filamin-A encoded by FLNA is an actin-binding protein that crosslinks actin filaments and links actin filaments to membrane glycoproteins. Filamin-A is involved in remodeling the cytoskeleton to effect changes in cell shape and migration. Filamin-A interacts with integrins, transmembrane receptor complexes, and second messengers. Defects in FLNA are a cause of several syndromes, including periventricular nodular heterotopias (PVNH1, PVNH4), topalato digital syndromes (OPD1, OPD2), frontometaphyseal dysplasia (FMD), Melnick-Needles syndrome (MNS), and X-linked congenital idiopathic intestinal pseudoobstruction (CIIPX). Two transcript variants encoding different isoforms have been found for this gene.

Recommended Dilution

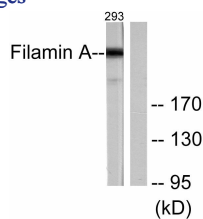
WB: 1: 500 - 1: 2000

IHC: 1: 100 - 1: 300

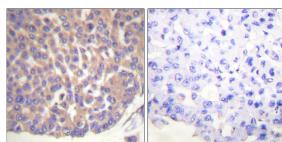
ELISA: 1: 10000

Not yet tested in other applications.

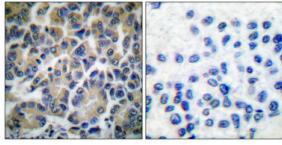
Images



Western blot analysis of lysates from 293 cells, treated with EGF 200ng/ml 5', using Filamin A Antibody. The lane on the right is blocked with the synthesized peptide.



Immunohistochemistry analysis of paraffin-embedded human breast carcinoma tissue, using Filamin A Antibody. The picture on the right is blocked with the synthesized peptide.



Immunohistochemical analysis of paraffin-embedded Human breast cancer. Antibody was diluted at 1:100(4° overnight). High-pressure and temperature Tris-EDTA,pH8.0 was used for antigen retrieval. Negative control (right) obtained from antibody was pre-absorbed by immunogen peptide.



Western Blot analysis of various cells using Filamin 1 Polyclonal Antibody diluted at 1:2000

Storage

-20°C for one year

501 Changsheng S Rd, Nanhu Dist, Jiaxing, Zhejiang, China

Tel: 86 21 31007137 | E-mail: save@bt-laboratory.com | www.bt-laboratory.com