

FIR Polyclonal Antibody

Description

Product type	Primary Antibody
Code	BT-AP03247
Host	Rabbit
Isotype	IgG
Size	20ul, 50ul, 100ul
Immunogen	The antiserum was produced against synthesized peptide derived from human FIR. AA range:331-380
Mol wt	119888
Species reactivity	Human, Mouse
Clonality	Polyclonal
Recommended application	WB, IF, ELISA
Concentration	1 mg/ml
Full name	FIR Antibody
Synonyms	FARP2; KIAA0793; PLEKHC3; FERM; RhoGEF and pleckstrin domain-containing protein 2; FERM domain including RhoGEF; FIR; Pleckstrin homology domain-containing family C member 3; PH domain-containing fam

This product is for research use only, not for use in human, therapeutic or diagnostic procedure.

Background

FARP2 is a Protein Coding gene. FERM RhoGEF and pleckstrin domain-containing protein 2 functions as guanine nucleotide exchange factor that activates RAC1. May have relatively low activity. Plays a role in the response to class 3 semaphorins and remodeling of the actin cytoskeleton. Plays a role in TNFSF11-mediated osteoclast differentiation, especially in podosome rearrangement and reorganization of the actin cytoskeleton. Regulates the activation of ITGB3, integrin signaling and cell adhesion. Diseases associated with FARP2 include verheij syndrome and aarskog-scott syndrome. Among its related pathways are Developmental Biology and Adherens junction. GO annotations related to this gene include Rho guanyl-nucleotide exchange factor activity and Rac guanyl-nucleotide exchange factor activity. An important paralog of this gene is FRMD3.

Recommended Dilution

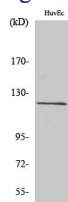
WB: 1: 500 - 1: 2000

IF: 1: 200 - 1: 1000

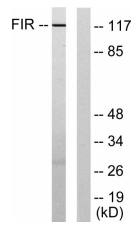
ELISA: 1: 20000

Not yet tested in other applications.

Images



Western Blot analysis of various cells using FIR Polyclonal Antibody



Western blot analysis of lysates from HUVEC cells, using FIR Antibody. The lane on the right is blocked with the synthesized peptide.

Storage

-20°C for one year

501 Changsheng S Rd, Nanhu Dist, Jiaxing, Zhejiang, China

Tel: 86 21 31007137 | E-mail: save@bt-laboratory.com | www.bt-laboratory.com