

KDEL1 Rabbit Polyclonal Antibody

Description

Product type	Primary Antibody
Code	BT-AP03249
Host	Rabbit
Isotype	IgG
Size	100ul, 50ul, 20ul
Immunogen	Synthesized peptide derived from human KDEL1
Mol wt	55220
Species reactivity	Human, Mouse
Clonality	Polyclonal
Recommended application	WB
Concentration	1 mg/ml
Full name	KDEL1
Synonyms	KDEL1

This product is for research use only, not for use in human, therapeutic or diagnostic procedure.

Background

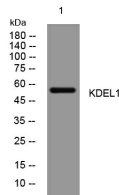
This gene encodes a protein product localized to the lumen of the endoplasmic reticulum. As a member of the endoplasmic reticulum protein family the encoded protein contains a Lys-Asp-Glu-Leu or KDEL motif located at the extreme C-terminus which prevents all endoplasmic reticulum resident proteins from being secreted. Proteins carrying this motif are bound by a receptor in the Golgi apparatus so that the receptor-ligand complex returns to the endoplasmic reticulum. A processed non-transcribed pseudogene located in an intron of a sodium transporter gene on chromosome 5 has been defined for this gene. This gene has multiple transcript variants which are predicted to encode distinct isoforms.

Recommended Dilution

WB: 1: 500 - 1: 2000

Not yet tested in other applications.

Images



Western blot analysis of lysates from KB cells, primary antibody was diluted at 1:1000, 4°C overnight

Storage

-20°C for 1 year