

FKBPL Polyclonal Antibody

Description

Product type	Primary Antibody
Code	BT-AP03257
Host	Rabbit
Isotype	IgG
Size	20ul, 50ul, 100ul
Immunogen	The antiserum was produced against synthesized peptide derived from human FKBPL. AA range:251-300
Mol wt	38176
Species reactivity	Human, Mouse, Rat
Clonality	Polyclonal
Recommended application	WB, IHC-p, ELISA
Concentration	1 mg/ml
Full name	FKBPL Antibody
Synonyms	FKBPL; DIR1; NG7; FK506-binding protein-like; WAF-1/CIP1 stabilizing protein 39; WISp39

This product is for research use only, not for use in human, therapeutic or diagnostic procedure.

Background

The protein encoded by FKBPL (FK506 binding protein like) has similarity to the immunophilin protein family, which play a role in immunoregulation and basic cellular processes involving protein folding and trafficking. The encoded protein is thought to have a potential role in the induced radioresistance. Also it appears to have some involvement in the control of the cell cycle.

Recommended Dilution

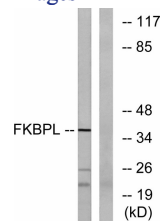
WB: 1: 500 - 1: 2000

IHC: 1: 100 - 1: 300

ELISA: 1: 20000

Not yet tested in other applications.

Images



Western blot analysis of lysates from Jurkat cells, using FKBPL Antibody. The lane on the right is blocked with the synthesized peptide.

Storage

-20°C for one year