

Fli-1 Polyclonal Antibody

Description

Product type	Primary Antibody
Code	BT-AP03266
Host	Rabbit
Isotype	IgG
Size	20ul, 50ul, 100ul
Immunogen	The antiserum was produced against synthesized peptide derived from human FLI1. AA range:291-340
Mol wt	50982
Species reactivity	Human, Mouse
Clonality	Polyclonal
Recommended application	WB, IHC-p, ELISA
Concentration	1 mg/ml
Full name	Fli-1 Antibody
Synonyms	FLI1; Friend leukemia integration 1 transcription factor; Proto-oncogene Fli-1; Transcription factor ERGB

This product is for research use only, not for use in human, therapeutic or diagnostic procedure.

Background

FLI1 encodes friend leukemia integration 1 transcription factor containing an ETS DNA-binding domain. FLI1 can undergo a t(11;22)(q24;q12) translocation with the Ewing sarcoma gene on chromosome 22, which results in a fusion gene that is present in the majority of Ewing sarcoma cases. An acute lymphoblastic leukemia-associated t(4;11)(q21;q23) translocation involving this gene has also been identified. Alternative splicing results in multiple transcript variants.

Recommended Dilution

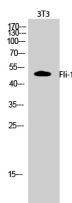
WB: 1: 500 - 1: 2000

IHC: 1: 100 - 1: 300

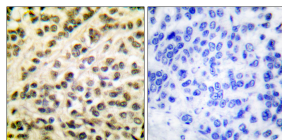
ELISA: 1: 10000

Not yet tested in other applications.

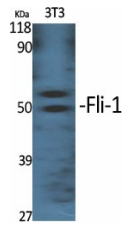
Images



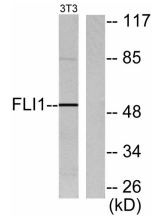
Western Blot analysis of 3T3 cells using Fli-1 Polyclonal Antibody cells nucleus.



Immunohistochemistry analysis of paraffin-embedded human breast carcinoma tissue, using FLI1 Antibody. The picture on the right is blocked with the synthesized peptide.



Western Blot analysis of various cells using Fli-1 Polyclonal Antibody cells nucleus.



Western blot analysis of lysates from NIH/3T3 cells, using FLI1 Antibody. The lane on the right is blocked with the synthesized peptide.

Storage

-20°C for one year

501 Changsheng S Rd, Nanhu Dist, Jiaxing, Zhejiang, China

Tel: 86 21 31007137 | E-mail: save@bt-laboratory.com | www.bt-laboratory.com