

## Fliz1 Polyclonal Antibody

### Description

<b>Product type</b>	Primary Antibody
<b>Code</b>	BT-AP03268
<b>Host</b>	Rabbit
<b>Isotype</b>	IgG
<b>Size</b>	20ul, 50ul, 100ul
<b>Immunogen</b>	The antiserum was produced against synthesized peptide derived from human ZC3H8. AA range:81-130
<b>Mol wt</b>	33576
<b>Species reactivity</b>	Human
<b>Clonality</b>	Polyclonal
<b>Recommended application</b>	WB, IHC-p, ELISA
<b>Concentration</b>	1 mg/ml
<b>Full name</b>	Fliz1 Antibody
<b>Synonyms</b>	ZC3H8; ZC3HDC8; Zinc finger CCCH domain-containing protein 8

**This product is for research use only, not for use in human, therapeutic or diagnostic procedure.**

### Background

ZC3H8 is a Protein Coding gene. Zinc finger CCCH domain-containing protein 8 acts as a transcriptional repressor of the GATA3 promoter. Sequence-specific DNA-binding factor that binds to the 5-AGGTCTC-3 sequence within the negative cis-acting element intronic regulatory region (IRR) of the GATA3 gene (By similarity). Component of the little elongation complex (LEC), a complex required to regulate small nuclear RNA (snRNA) gene transcription by RNA polymerase II and III (PubMed:23932780). Induces thymocyte apoptosis when overexpressed, which may indicate a role in regulation of thymocyte homeostasis. Among its related pathways are Gene Expression and RNA Polymerase II Transcription Initiation And Promoter Clearance. GO annotations related to this gene include poly (A) RNA binding and sequence-specific DNA binding. An important paralog of this gene is ZC3H4.

### Recommended Dilution

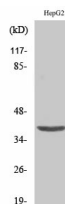
WB: 1: 500 - 1: 2000

IHC: 1: 100 - 1: 300

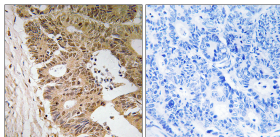
ELISA: 1: 40000

Not yet tested in other applications.

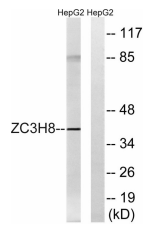
### Images



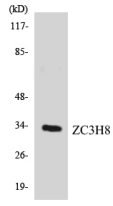
Western Blot analysis of various cells using Fliz1 Polyclonal Antibody cells nucleus.



Immunohistochemistry analysis of paraffin-embedded human colon carcinoma tissue, using ZC3H8 Antibody. The picture on the right is blocked with the synthesized peptide.



Western blot analysis of lysates from HepG2 cells, using ZC3H8 Antibody. The lane on the right is blocked with the synthesized peptide.



Western blot analysis of the lysates from COLO205 cells using ZC3H8 antibody.

### Storage

-20°C for one year

501 Changsheng S Rd, Nanhu Dist, Jiaxing, Zhejiang, China

Tel: 86 21 31007137 | E-mail: [save@bt-laboratory.com](mailto:save@bt-laboratory.com) | [www.bt-laboratory.com](http://www.bt-laboratory.com)