

## Flk-1 Polyclonal Antibody

### Description

<b>Product type</b>	Primary Antibody
<b>Code</b>	BT-AP03272
<b>Host</b>	Rabbit
<b>Isotype</b>	IgG
<b>Size</b>	20ul, 50ul, 100ul
<b>Immunogen</b>	The antiserum was produced against synthesized peptide derived from human VEGFR2. AA range:1180-1229
<b>Mol wt</b>	151527
<b>Species reactivity</b>	Human, Mouse, Rat
<b>Clonality</b>	Polyclonal
<b>Recommended application</b>	WB, IHC-p, IF, ELISA
<b>Concentration</b>	1 mg/ml
<b>Full name</b>	Flk-1 Antibody
<b>Synonyms</b>	KDR; FLK1; VEGFR2; Vascular endothelial growth factor receptor 2; VEGFR-2; Fetal liver kinase 1; FLK-1; Kinase insert domain receptor; KDR; Protein-tyrosine kinase receptor flk-1; CD antigen CD309

This product is for research use only, not for use in human, therapeutic or diagnostic procedure.

### Background

VEGF R1 is one of the five receptor tyrosine kinases (RTKs) (Flt-1, KDR/Flk-1, Flt-4, tie-1, and tek/tie-2) whose expression is almost exclusively restricted to the endothelial cells. Tie-1 and tek/tie-2 define a new class of RTKs containing two immunoglobulin-like domains, three EGF homology domains and three fibronectin type III domains in their extracellular regions. Flt-1, KDR/Flk-1 and Flt-4 are members of the class III subfamily of RTKs containing seven immunoglobulin-like repeats in their extracellular domains. All five RTKs are likely to play central roles in vasculogenesis and angiogenesis.

### Recommended Dilution

WB: 1: 500 - 1: 2000

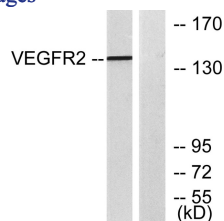
IHC: 1: 100 - 1: 300

IF: 1: 200 - 1: 1000

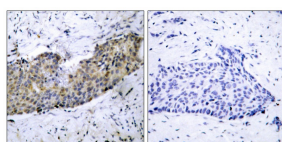
ELISA: 1: 20000

Not yet tested in other applications.

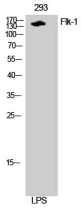
### Images



Western blot analysis of lysates from 293 cells, treated with LPS 100ng/ml 30', using VEGFR2 Antibody. The lane on the right is blocked with the synthesized peptide.



Immunohistochemistry analysis of paraffin-embedded human breast carcinoma tissue, using VEGFR2 Antibody. The picture on the right is blocked with the synthesized peptide.



## Western Blot analysis of 293 cells using Flk-1 Polyclonal Antibody

### Storage

-20°C for one year

501 Changsheng S Rd, Nanhu Dist, Jiaxing, Zhejiang, China

Tel: 86 21 31007137 | E-mail: [save@bt-laboratory.com](mailto:save@bt-laboratory.com) | [www.bt-laboratory.com](http://www.bt-laboratory.com)