

Flotillin-2 Polyclonal Antibody

Description

| | |
|-------------------------|--|
| Product type | Primary Antibody |
| Code | BT-AP03274 |
| Host | Rabbit |
| Isotype | IgG |
| Size | 20ul, 50ul, 100ul |
| Immunogen | The antiserum was produced against synthesized peptide derived from human Flotillin-2. AA range:95-144 |
| Mol wt | 41685 |
| Species reactivity | Human, Mouse, Rat |
| Clonality | Polyclonal |
| Recommended application | WB, ELISA |
| Concentration | 1 mg/ml |
| Full name | Flotillin-2 Antibody |
| Synonyms | FLOT2; ESA1; M17S1; Flotillin-2; Epidermal surface antigen; ESA; Membrane component chromosome 17 surface marker 1 |

This product is for research use only, not for use in human, therapeutic or diagnostic procedure.

Background

Caveolae are small domains on the inner cell membrane involved in vesicular trafficking and signal transduction. FLOT2 encodes a caveolae-associated, integral membrane protein, which is thought to function in neuronal signaling.

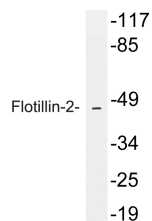
Recommended Dilution

WB: 1: 500 - 1: 2000

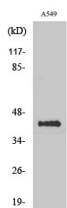
ELISA: 1: 10000

Not yet tested in other applications.

Images



Western blot analysis of lysate from A549 cells, using Flotillin-2 antibody.



Western Blot analysis of various cells using Flotillin-2 Polyclonal Antibody

Storage

-20°C for one year

