

Flotillin-2 Polyclonal Antibody

Description

Product type	Primary Antibody
Code	BT-AP03275
Host	Rabbit
Isotype	IgG
Size	20ul, 50ul, 100ul
Immunogen	Recombinant Protein of Flotillin-2
Mol wt	151527
Species reactivity	Human, Rat, Mouse
Clonality	Polyclonal
Recommended application	WB, IHC-p
Concentration	1 mg/ml
Full name	Flotillin-2 Antibody
Synonyms	Flotillin-2 (Epidermal surface antigen) (ESA) (Membrane component chromosome 17 surface marker 1)

This product is for research use only, not for use in human, therapeutic or diagnostic procedure.

Background

Vascular endothelial growth factor (VEGF) is a major growth factor for endothelial cells. KDR encodes one of the two receptors of the VEGF.Kinase insert domain receptor, known as kinase insert domain receptor, is a type III receptor tyrosine kinase. It functions as the main mediator of VEGF-induced endothelial proliferation, survival, migration, tubular morphogenesis and sprouting. The signalling and trafficking of this receptor are regulated by multiple factors, including Rab GTPase, P2Y purine nucleotide receptor, integrin alphaVbeta3, T-cell protein tyrosine phosphatase, etc. Mutations of KDR are implicated in infantile capillary hemangiomas.

Recommended Dilution

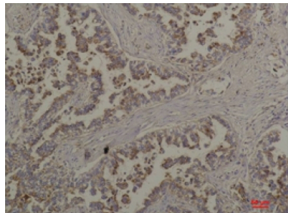
WB: 1: 500 - 1: 2000

IHC: 1: 100 - 1: 300

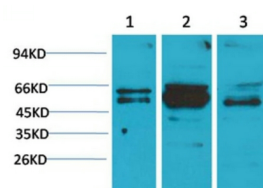
ELISA: 1: 40000

Not yet tested in other applications.

Images



Immunohistochemical analysis of paraffin-embedded Human Lung Carcinoma using Flotillin-2 Rabbit pAb diluted at 1:200



Western blot analysis of 1) A431, 2) Mouse Brain Tissue, 3) Rat Brain Tissue with Flotillin-2 Rabbit pAb diluted at 1:2,000.

Storage

-20°C for one year

501 Changsheng S Rd, Nanhu Dist, Jiaxing, Zhejiang, China

Tel: 86 21 31007137 | E-mail: save@bt-laboratory.com | www.bt-laboratory.com