

FN1 Polyclonal Antibody

Description

Product type	Primary Antibody
Code	BT-AP03292
Host	Rabbit
Isotype	IgG
Size	20ul, 50ul, 100ul
Immunogen	The antiserum was produced against synthesized peptide derived from human Fibronectin 1. AA range:2337-2386
Mol wt	262607
Species reactivity	Human, Mouse, Rat
Clonality	Polyclonal
Recommended application	WB, IHC-p, ELISA
Concentration	1 mg/ml
Full name	FN1 Antibody
Synonyms	FN1; FN; Fibronectin; FN; Cold-insoluble globulin; CIG

This product is for research use only, not for use in human, therapeutic or diagnostic procedure.

Background

FN1 encodes fibronectin, a glycoprotein present in a soluble dimeric form in plasma, and in a dimeric or multimeric form at the cell surface and in extracellular matrix. The encoded preproprotein is proteolytically processed to generate the mature protein. Fibronectin is involved in cell adhesion and migration processes including embryogenesis, wound healing, blood coagulation, host defense, and metastasis. The gene has three regions subject to alternative splicing, with the potential to produce 20 different transcript variants, at least one of which encodes an isoform that undergoes proteolytic processing. The full-length nature of some variants has not been determined.

Recommended Dilution

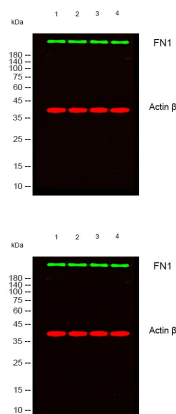
WB: 1: 500 - 1: 2000

IHC: 1: 100 - 1: 300

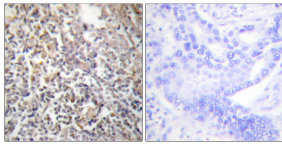
ELISA: 1: 20000

Not yet tested in other applications.

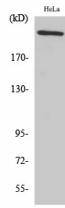
Images



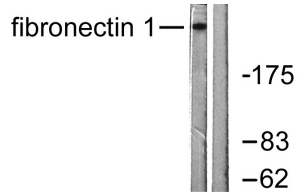
Western blot analysis of lysates from 1) 3T3 , 2) KB ,3) K562 ,4) 293T cells, (Green) primary antibody was diluted at 1:1000, 4° over night, secondary antibody(cat:RS23920)was diluted at 1:10000, 37° 1 hour. (Red) Actin β Monoclonal Antibody(5B7) (cat:YM3028) antibody was diluted at 1:5000 as loading control, 4° over night,secondary antibody(cat:RS23710)was diluted at 1:10000, 37° 1 hour.



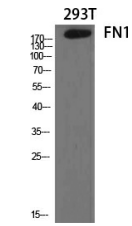
Immunohistochemistry analysis of paraffin-embedded human thyroid gland tissue, using Fibronectin 1 Antibody. The picture on the right is blocked with the synthesized peptide.



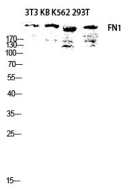
Western Blot analysis of HeLa cells using FN1 Polyclonal Antibody diluted at 1:2000



Western blot analysis of lysates from HeLa cells, using Fibronectin 1 Antibody. The lane on the right is blocked with the synthesized peptide.



Western Blot analysis of various cells using FN1 Polyclonal Antibody diluted at 1:2000



Western blot analysis of 3T3 KB K562 293T lysis using FN1 antibody. Antibody was diluted at 1:2000

Storage

-20°C for one year

501 Changsheng S Rd, Nanhu Dist, Jiaxing, Zhejiang, China

Tel: 86 21 31007137 | E-mail: save@bt-laboratory.com | www.bt-laboratory.com