

KLK10 Rabbit Polyclonal Antibody

Description

Product type	Primary Antibody
Code	BT-AP03301
Host	Rabbit
Isotype	IgG
Size	100ul, 50ul, 20ul
Immunogen	Synthesized peptide derived from human KLK10
Mol wt	30360
Species reactivity	Human, Rat
Clonality	Polyclonal
Recommended application	WB
Concentration	1 mg/ml
Full name	KLK10
Synonyms	KLK10

This product is for research use only, not for use in human, therapeutic or diagnostic procedure.

Background

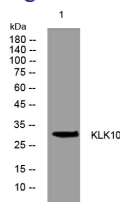
Kallikreins are a subgroup of serine proteases having diverse physiological functions. Growing evidence suggests that many kallikreins are implicated in carcinogenesis and some have potential as novel cancer and other disease biomarkers. This gene is one of the fifteen kallikrein subfamily members located in a cluster on chromosome 19. Its encoded protein is secreted and may play a role in suppression of tumorigenesis in breast and prostate cancers. Alternate splicing of this gene results in multiple transcript variants encoding the same protein.

Recommended Dilution

WB: 1: 500 - 1: 2000

Not yet tested in other applications.

Images



Western blot analysis of lysates from PC-12 cells, primary antibody was diluted at 1:1000, 4°C overnight

Storage

-20°C for 1 year