

FOP Polyclonal Antibody

Description

Product type	Primary Antibody
Code	BT-AP03302
Host	Rabbit
Isotype	IgG
Size	20ul, 50ul, 100ul
Immunogen	The antiserum was produced against synthesized peptide derived from human FGFR1 Oncogene Partner. AA range:341-390
Mol wt	43065
Species reactivity	Human, Mouse, Rat
Clonality	Polyclonal
Recommended application	WB, IHC-p, IF, ELISA
Concentration	1 mg/ml
Full name	FOP Antibody
Synonyms	FGFR1OP; FOP; FGFR1 oncogene partner

This product is for research use only, not for use in human, therapeutic or diagnostic procedure.

Background

FGFR1OP encodes a largely hydrophilic centrosomal protein, FGFR1 oncogene partner, that is required for anchoring microtubules to subcellular structures. A t(6;8)(q27;p11) chromosomal translocation, fusing this gene and the fibroblast growth factor receptor 1 (FGFR1) gene, has been found in cases of myeloproliferative disorder. The resulting chimeric protein contains the N-terminal leucine-rich region of this encoded protein fused to the catalytic domain of FGFR1. Alterations in this gene may also be associated with Crohn's disease, Graves' disease, and vitiligo. Alternatively spliced transcript variants that encode different proteins have been identified.

Recommended Dilution

WB: 1: 500 - 1: 2000

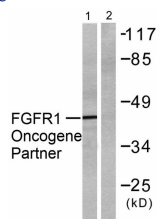
IHC: 1: 100 - 1: 300

IF: 1: 200 - 1: 1000

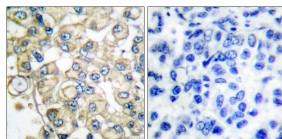
ELISA: 1: 10000

Not yet tested in other applications.

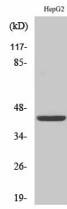
Images



Western blot analysis of lysates from HepG2 cells, using FGFR1 Oncogene Partner Antibody. The lane on the right is blocked with the synthesized peptide.



Immunohistochemistry analysis of paraffin-embedded human breast carcinoma tissue, using FGFR1 Oncogene Partner Antibody. The picture on the right is blocked with the synthesized peptide.



Western Blot analysis of various cells using FOP Polyclonal Antibody

Storage

-20°C for one year

501 Changsheng S Rd, Nanhu Dist, Jiaxing, Zhejiang, China

Tel: 86 21 31007137 | E-mail: save@bt-laboratory.com | www.bt-laboratory.com