

## Formin 2 Polyclonal Antibody

### Description

<b>Product type</b>	Primary Antibody
<b>Code</b>	BT-AP03303
<b>Host</b>	Rabbit
<b>Isotype</b>	IgG
<b>Size</b>	20ul, 50ul, 100ul
<b>Immunogen</b>	The antiserum was produced against synthesized peptide derived from human FMN2. AA range:1541-1590
<b>Mol wt</b>	180106
<b>Species reactivity</b>	Human, Mouse
<b>Clonality</b>	Polyclonal
<b>Recommended application</b>	IHC-p, ELISA
<b>Concentration</b>	1 mg/ml
<b>Full name</b>	Formin 2 Antibody
<b>Synonyms</b>	FMN2; Formin-2

This product is for research use only, not for use in human, therapeutic or diagnostic procedure.

### Background

FMN2 (formin 2) is a member of the formin homology protein family. The encoded protein is thought to have essential roles in organization of the actin cytoskeleton and in cell polarity. Mutations in FMN2 have been associated with mental retardation autosomal recessive 47 (MRT47). Alternatively spliced transcript variants have been identified.

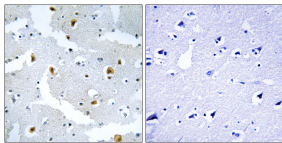
### Recommended Dilution

IHC: 1: 100 - 1: 300

ELISA: 1: 40000

Not yet tested in other applications.

### Images



Immunohistochemistry analysis of paraffin-embedded human brain tissue, using FMN2 Antibody.  
The picture on the right is blocked with the synthesized peptide.

### Storage

-20°C for one year

501 Changsheng S Rd, Nanhu Dist, Jiaxing, Zhejiang, China

Tel: 86 21 31007137 | E-mail: [save@bt-laboratory.com](mailto:save@bt-laboratory.com) | [www.bt-laboratory.com](http://www.bt-laboratory.com)