

## FOSL2 Polyclonal Antibody

### Description

Product type	Primary Antibody
Code	BT-AP03305
Host	Rabbit
Isotype	IgG
Size	20ul, 50ul, 100ul
Immunogen	The antiserum was produced against synthesized peptide derived from human Fra-2. AA range:271-320
Mol wt	35193
Species reactivity	Human, Mouse, Rat
Clonality	Polyclonal
Recommended application	WB, IHC-p, ELISA
Concentration	1 mg/ml
Full name	FOSL2 Antibody
Synonyms	FOSL2; FRA2; Fos-related antigen 2; FRA-2

This product is for research use only, not for use in human, therapeutic or diagnostic procedure.

### Background

The Fos gene family consists of 4 members: fOS, FOSB, FOSL1, and FOSL2. These genes encode leucine zipper proteins that can dimerize with proteins of the JUN family, thereby forming the transcription factor complex AP-1. As such, the FOS proteins have been implicated as regulators of cell proliferation, differentiation, and transformation.

### Recommended Dilution

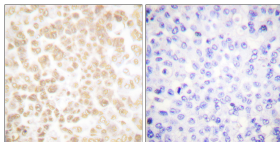
WB: 1: 500 - 1: 2000

IHC: 1: 100 - 1: 300

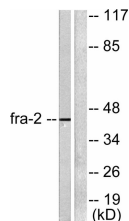
ELISA: 1: 10000

Not yet tested in other applications.

### Images



Immunohistochemistry analysis of paraffin-embedded human breast carcinoma tissue, using Fra-2 Antibody. The picture on the right is blocked with the synthesized peptide.



Western blot analysis of lysates from LOVO cells, using Fra-2 Antibody. The lane on the right is blocked with the synthesized peptide.

### Storage

-20°C for one year