

FoxD4L1 Polyclonal Antibody

Description

Product type	Primary Antibody
Code	BT-AP03313
Host	Rabbit
Isotype	IgG
Size	20ul, 50ul, 100ul
Immunogen	Synthesized peptide derived from FoxD4L1 . at AA range: 320-400
Mol wt	43610
Species reactivity	Human
Clonality	Polyclonal
Recommended application	WB, ELISA
Concentration	1 mg/ml
Full name	FoxD4L1 Antibody
Synonyms	FOXD4L1; Forkhead box protein D4-like 1; FOXD4-like 1

This product is for research use only, not for use in human, therapeutic or diagnostic procedure.

Background

FOXD4L1 is a member of the forkhead/winged-helix (FOX) family of transcription factors with highly conserved FOX DNA-binding domains. Members of the FOX family of transcription factors are regulators of embryogenesis and may play a role in human cancer. This gene lies in a region of chromosome 2 that surrounds the site where two ancestral chromosomes fused to form human chromosome 2. This region is duplicated elsewhere in the human genome, primarily in subtelomeric and pericentromeric locations, thus multiple copies of this gene have been found.

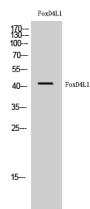
Recommended Dilution

WB: 1: 500 - 1: 2000

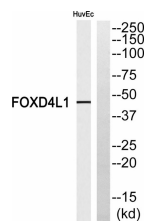
ELISA: 1: 40000

Not yet tested in other applications.

Images



Western Blot analysis of HuvEc cells using FoxD4L1 Polyclonal Antibody cells nucleus.



Western blot analysis of FOXD4L1 Antibody. The lane on the right is blocked with the FOXD4L1 peptide.

Storage

-20°C for one year

501 Changsheng S Rd, Nanhu Dist, Jiaxing, Zhejiang, China

Tel: 86 21 31007137 | E-mail: save@bt-laboratory.com | www.bt-laboratory.com