

## FoxE1 Polyclonal Antibody

### Description

Product type	Primary Antibody
Code	BT-AP03314
Host	Rabbit
Isotype	IgG
Size	20ul, 50ul, 100ul
Immunogen	The antiserum was produced against synthesized peptide derived from human TTF2. AA range:51-100
Mol wt	38289
Species reactivity	Human, Mouse, Rat
Clonality	Polyclonal
Recommended application	IF, ELISA
Concentration	1 mg/ml
Full name	FoxE1 Antibody
Synonyms	FOXE1; FKHL15; FOXE2; TITF2; TTF2; Forkhead box protein E1; Forkhead box protein E2; Forkhead-related protein FKHL15; HFKH4; HNF-3/fork head-like protein 5; HFKL5; Thyroid transcription factor 2; TTF-

This product is for research use only, not for use in human, therapeutic or diagnostic procedure.

### Background

FOXE1 belongs to the forkhead family of transcription factors, which is characterized by a distinct forkhead domain. FOXE1 functions as a thyroid transcription factor which likely plays a crucial role in thyroid morphogenesis. Mutations in this gene are associated with congenital hypothyroidism and cleft palate with thyroid dysgenesis. The map localization of this gene suggests it may also be a candidate gene for squamous cell epithelioma and hereditary sensory neuropathy type I.

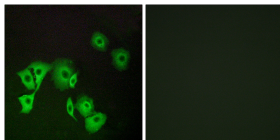
### Recommended Dilution

IF: 1: 200 - 1: 1000

ELISA: 1: 20000

Not yet tested in other applications.

### Images



Immunofluorescence analysis of A549 cells, using TTF2 Antibody. The picture on the right is blocked with the synthesized peptide.

### Storage

-20°C for one year