

FoxE1 Polyclonal Antibody

Description

Product type	Primary Antibody
Code	BT-AP03315
Host	Rabbit
Isotype	IgG
Size	20ul, 50ul, 100ul
Immunogen	The antiserum was produced against synthesized peptide derived from human TTF2. AA range:10-59
Mol wt	38289
Species reactivity	Human, Mouse, Rat
Clonality	Polyclonal
Recommended application	WB, IHC-p, ELISA
Concentration	1 mg/ml
Full name	FoxE1 Antibody
Synonyms	FOXE1; FKHL15; FOXE2; TITF2; TTF2; Forkhead box protein E1; Forkhead box protein E2; Forkhead-related protein FKHL15; HFKH4; HNF-3/fork head-like protein 5; HFKL5; Thyroid transcription factor 2; TTF-

This product is for research use only, not for use in human, therapeutic or diagnostic procedure.

Background

FOXE1 belongs to the forkhead family of transcription factors, which is characterized by a distinct forkhead domain. FOXE1 functions as a thyroid transcription factor which likely plays a crucial role in thyroid morphogenesis. Mutations in this gene are associated with congenital hypothyroidism and cleft palate with thyroid dysgenesis. The map localization of this gene suggests it may also be a candidate gene for squamous cell epithelioma and hereditary sensory neuropathy type I.

Recommended Dilution

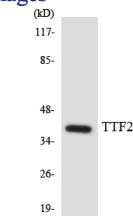
WB: 1: 500 - 1: 2000

IHC: 1: 100 - 1: 300

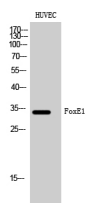
ELISA: 1: 10000

Not yet tested in other applications.

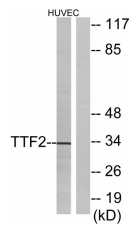
Images



Western blot analysis of the lysates from HUVEC cells using TTF2 antibody.



Western Blot analysis of HUVEC cells using FoxE1 Polyclonal Antibody cells nucleus.



Western blot analysis of lysates from HUVEC cells, using TTF2 Antibody. The lane on the right is blocked with the synthesized peptide.

Storage

-20°C for one year

501 Changsheng S Rd, Nanhu Dist, Jiaxing, Zhejiang, China

Tel: 86 21 31007137 | E-mail: save@bt-laboratory.com | www.bt-laboratory.com