

FoxI1 Polyclonal Antibody

Description

Product type	Primary Antibody
Code	BT-AP03318
Host	Rabbit
Isotype	IgG
Size	20ul, 50ul, 100ul
Immunogen	The antiserum was produced against synthesized peptide derived from human FOXI1. AA range:191-240
Mol wt	40973
Species reactivity	Human, Mouse
Clonality	Polyclonal
Recommended application	IHC-p, WB, ELISA
Concentration	1 mg/ml
Full name	FoxI1 Antibody
Synonyms	FOXI1; FKHL10; FREAC6; Forkhead box protein I1; Forkhead-related protein FKHL10; Forkhead-related transcription factor 6; FREAC-6; Hepatocyte nuclear factor 3 forkhead homolog 3; HFH-3; HNF-3/fork-hea

This product is for research use only, not for use in human, therapeutic or diagnostic procedure.

Background

FOXI1 belongs to the forkhead family of transcription factors which is characterized by a distinct forkhead domain. The specific function of this gene has not yet been determined; however, it is possible that this gene plays an important role in the development of the cochlea and vestibulum, as well as embryogenesis. Mutations in this gene may be associated with the common cavity phenotype. Two transcript variants encoding different isoforms have been found for this gene.

Recommended Dilution

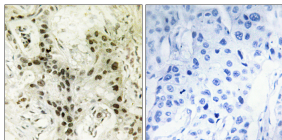
WB: 1: 500 - 2000

ELISA: 1: 5000

IHC: 1: 100 - 1: 300

Not yet tested in other applications.

Images



Immunohistochemistry analysis of paraffin-embedded human breast carcinoma tissue, using FOXI1 Antibody. The picture on the right is blocked with the synthesized peptide.

Storage

-20°C for one year