

FoxO1A Polyclonal Antibody

Description

Product type	Primary Antibody
Code	BT-AP03331
Host	Rabbit
Isotype	IgG
Size	20ul, 50ul, 100ul
Immunogen	The antiserum was produced against synthesized peptide derived from human FOXO1A. AA range:295-344
Mol wt	69662
Species reactivity	Human, Mouse, Rat
Clonality	Polyclonal
Recommended application	WB, IHC-p, IF, ELISA
Concentration	1 mg/ml
Full name	FoxO1A Antibody
Synonyms	FOXO1; FKHR; FOXO1A; Forkhead box protein O1; Forkhead box protein O1A; Forkhead in rhabdomyosarcoma

This product is for research use only, not for use in human, therapeutic or diagnostic procedure.

Background

FOXO1 belongs to the forkhead family of transcription factors which are characterized by a distinct forkhead domain. The specific function of this gene has not yet been determined; however, it may play a role in myogenic growth and differentiation. Translocation of FOXO1 with PAX3 has been associated with alveolar rhabdomyosarcoma.

Recommended Dilution

WB: 1: 500 - 1: 2000

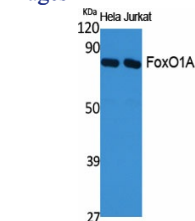
IHC: 1: 100 - 1: 300

IF: 1: 200 - 1: 1000

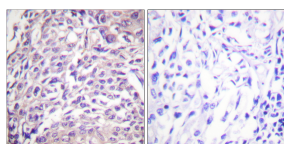
ELISA: 1: 10000

Not yet tested in other applications.

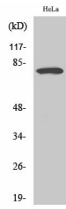
Images



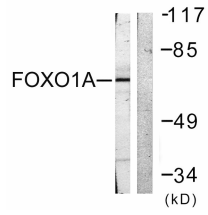
Western Blot analysis of various cells using FoxO1A Polyclonal Antibody diluted at 1:1000



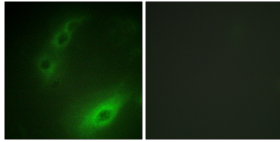
Immunohistochemistry analysis of paraffin-embedded human breast carcinoma tissue, using FOXO1A Antibody. The picture on the right is blocked with the synthesized peptide.



Western Blot analysis of HeLa cells using FoxO1A Polyclonal Antibody diluted at 1:1000



Western blot analysis of lysates from HeLa cells, treated with Serum 20% 15', using FOXO1A Antibody. The lane on the right is blocked with the synthesized peptide.



Immunofluorescence analysis of HUVEC cells, using FOXO1A Antibody. The picture on the right is blocked with the synthesized peptide.

Storage

-20°C for one year

501 Changsheng S Rd, Nanhu Dist, Jiaxing, Zhejiang, China

Tel: 86 21 31007137 | E-mail: save@bt-laboratory.com | www.bt-laboratory.com