

FOXP3 Polyclonal Antibody

Description

Product type	Primary Antibody
Code	BT-AP03342
Host	Rabbit
Isotype	IgG
Size	20ul, 50ul, 100ul
Immunogen	The antiserum was produced against synthesized peptide derived from the C-terminal region of human FOXP3. AA range:381-430
Mol wt	47410
Species reactivity	Human, Mouse, Rat
Clonality	Polyclonal
Recommended application	WB, IHC-p, ELISA
Concentration	1 mg/ml
Full name	FOXP3 Antibody
Synonyms	FOXP3; IPEX; JM2; Forkhead box protein P3; Scurfin

This product is for research use only, not for use in human, therapeutic or diagnostic procedure.

Background

Forkhead box protein P3 encoded by FOXP3 is a member of the forkhead/winged-helix family of transcriptional regulators. Defects in this gene are the cause of immunodeficiency polyendocrinopathy, enteropathy, X-linked syndrome (IPEX), also known as X-linked autoimmunity-immunodeficiency syndrome. Alternatively spliced transcript variants encoding different isoforms have been identified.

Recommended Dilution

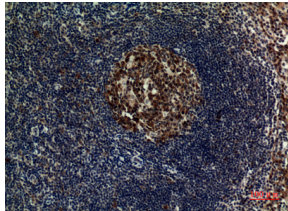
WB: 1: 500 - 1: 2000

IHC-p: 1: 100 - 1: 300

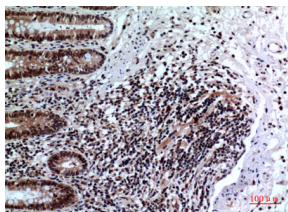
ELISA: 1: 20000

Not yet tested in other applications.

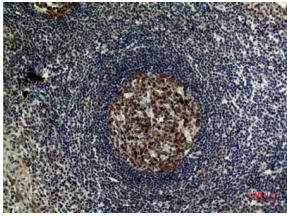
Images



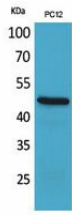
Immunohistochemical analysis of paraffin-embedded human-tonsilla, antibody was diluted at 1:100



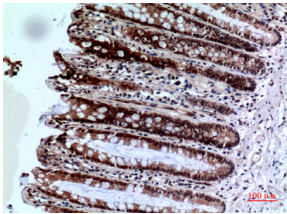
Immunohistochemical analysis of paraffin-embedded human-colon, antibody was diluted at 1:100



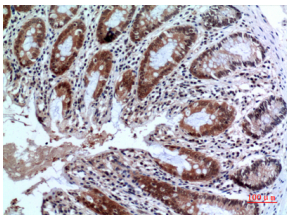
Immunohistochemical analysis of paraffin-embedded human-tonsilla, antibody was diluted at 1:100



Western Blot analysis of PC12 cells using FOXP3 Polyclonal Antibody. Secondary antibody was diluted at 1:20000



Immunohistochemical analysis of paraffin-embedded human-colon, antibody was diluted at 1:100



Immunohistochemical analysis of paraffin-embedded human-colon, antibody was diluted at 1:100

Storage

-20°C for one year

501 Changsheng S Rd, Nanhu Dist, Jiaxing, Zhejiang, China

Tel: 86 21 31007137 | E-mail: save@bt-laboratory.com | www.bt-laboratory.com