

FPRL2 Polyclonal Antibody

Description

Product type	Primary Antibody
Code	BT-AP03347
Host	Rabbit
Isotype	IgG
Size	20ul, 50ul, 100ul
Immunogen	The antiserum was produced against synthesized peptide derived from human FPRL2. AA range:304-353
Mol wt	39965
Species reactivity	Human
Clonality	Polyclonal
Recommended application	IF, ELISA
Concentration	1 mg/ml
Full name	FPRL2 Antibody
Synonyms	FPR3; FPRH1; FPRL2; N-formyl peptide receptor 3; FMLP-related receptor II; FMLP-R-II; Formyl peptide receptor-like 2

This product is for research use only, not for use in human, therapeutic or diagnostic procedure.

Background

Low affinity receptor for N-formyl-methionyl peptides, which are powerful neutrophils chemotactic factors. Binding of FMLP to the receptor causes activation of neutrophils. This response is mediated via a G-protein that activates a phosphatidylinositol-calcium second messenger system.

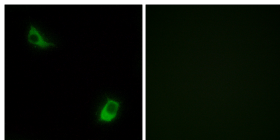
Recommended Dilution

IF: 1: 200 - 1: 1000

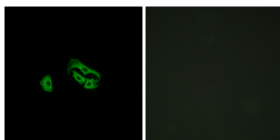
ELISA: 1: 5000

Not yet tested in other applications.

Images



Immunofluorescence analysis of LOVO cells, using FPRL2 Antibody. The picture on the right is blocked with the synthesized peptide.



Immunofluorescence analysis of HeLa cells, using FPRL2 Antibody. The picture on the right is blocked with the synthesized peptide.

Storage

-20°C for one year