

Frizzled-1 Polyclonal Antibody

Description

Product type	Primary Antibody
Code	BT-AP03353
Host	Rabbit
Isotype	IgG
Size	20ul, 50ul, 100ul
Immunogen	The antiserum was produced against synthesized peptide derived from human FZD1. AA range:16-65
Mol wt	71158
Species reactivity	Human
Clonality	Polyclonal
Recommended application	WB, IF, ELISA
Concentration	1 mg/ml
Full name	Frizzled-1 Antibody
Synonyms	FZD1; Frizzled-1; Fz-1; hFz1; FzE1

This product is for research use only, not for use in human, therapeutic or diagnostic procedure.

Background

Members of the frizzled gene family encode 7-transmembrane domain proteins that are receptors for Wnt signaling proteins. The FZD1 (frizzled class receptor 1) protein contains a signal peptide, a cysteine-rich domain in the N-terminal extracellular region, 7 transmembrane domains, and a C-terminal PDZ domain-binding motif. The FZD1 transcript is expressed in various tissues.

Recommended Dilution

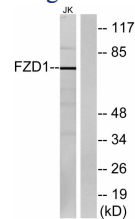
WB: 1: 500 - 1: 2000

IF: 1: 200 - 1: 1000

ELISA: 1: 20000

Not yet tested in other applications.

Images



Western blot analysis of lysates from Jurkat cells, using FZD1 Antibody. The lane on the right is blocked with the synthesized peptide.

Storage

-20°C for one year