

Frizzled-6 Polyclonal Antibody

Description

Product type	Primary Antibody
Code	BT-AP03366
Host	Rabbit
Isotype	IgG
Size	20ul, 50ul, 100ul
Immunogen	The antiserum was produced against synthesized peptide derived from human FZD6. AA range:116-165
Mol wt	79274
Species reactivity	Human
Clonality	Polyclonal
Recommended application	WB, IHC-p, IF, ELISA
Concentration	1 mg/ml
Full name	Frizzled-6 Antibody
Synonyms	FZD6; Frizzled-6; Fz-6; hFz6

This product is for research use only, not for use in human, therapeutic or diagnostic procedure.

Background

FZD6 (frizzled class receptor 6) represents a member of the frizzled gene family, which encode 7-transmembrane domain proteins that are receptors for Wnt signaling proteins. The protein encoded by this family member contains a signal peptide, a cysteine-rich domain in the N-terminal extracellular region, and seven transmembrane domains, but unlike other family members, this protein does not contain a C-terminal PDZ domain-binding motif. This protein functions as a negative regulator of the canonical Wnt/beta-catenin signaling cascade, thereby inhibiting the processes that trigger oncogenic transformation, cell proliferation, and inhibition of apoptosis. Alternative splicing results in multiple transcript variants, some of which do not encode a protein with a predicted signal peptide.

Recommended Dilution

WB: 1: 500 - 1: 2000

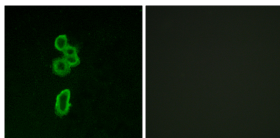
IHC: 1: 100 - 1: 300

IF: 1: 200 - 1: 1000

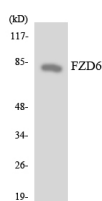
ELISA: 1: 5000

Not yet tested in other applications.

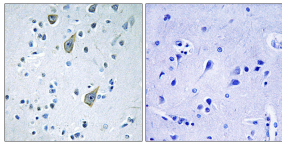
Images



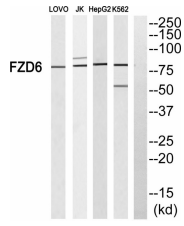
Immunofluorescence analysis of MCF7 cells, using FZD6 Antibody. The picture on the right is blocked with the synthesized peptide.



Western blot analysis of the lysates from 293 cells using FZD6 antibody.



Immunohistochemistry analysis of paraffin-embedded human brain tissue, using FZD6 Antibody. The picture on the right is blocked with the synthesized peptide.



Western blot analysis of FZD6 Antibody. The lane on the right is blocked with the FZD6 peptide.

Storage

-20°C for one year

501 Changsheng S Rd, Nanhu Dist, Jiaxing, Zhejiang, China

Tel: 86 21 31007137 | E-mail: save@bt-laboratory.com | www.bt-laboratory.com