

## Frizzled-6 Polyclonal Antibody

### Description

Product type	Primary Antibody
Code	BT-AP03367
Host	Rabbit
Isotype	IgG
Size	20ul, 50ul, 100ul
Immunogen	The antiserum was produced against synthesized peptide derived from human FZD6. AA range:121-170
Mol wt	79274
Species reactivity	Human
Clonality	Polyclonal
Recommended application	WB, IF, ELISA
Concentration	1 mg/ml
Full name	Frizzled-6 Antibody
Synonyms	FZD6; Frizzled-6; Fz-6; hFz6

This product is for research use only, not for use in human, therapeutic or diagnostic procedure.

### Background

FZD6 (frizzled class receptor 6) represents a member of the frizzled gene family, which encode 7-transmembrane domain proteins that are receptors for Wnt signaling proteins. The protein encoded by this family member contains a signal peptide, a cysteine-rich domain in the N-terminal extracellular region, and seven transmembrane domains, but unlike other family members, this protein does not contain a C-terminal PDZ domain-binding motif. This protein functions as a negative regulator of the canonical Wnt/beta-catenin signaling cascade, thereby inhibiting the processes that trigger oncogenic transformation, cell proliferation, and inhibition of apoptosis. Alternative splicing results in multiple transcript variants, some of which do not encode a protein with a predicted signal peptide.

### Recommended Dilution

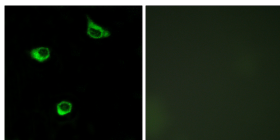
WB: 1: 500 - 1: 2000

IF: 1: 200 - 1: 1000

ELISA: 1: 5000

Not yet tested in other applications.

### Images



Immunofluorescence analysis of COS7 cells, using FZD6 Antibody. The picture on the right is blocked with the synthesized peptide.

### Storage

-20°C for one year