

Frizzled-7 Polyclonal Antibody

Description

Product type	Primary Antibody
Code	BT-AP03368
Host	Rabbit
Isotype	IgG
Size	20ul, 50ul, 100ul
Immunogen	The antiserum was produced against synthesized peptide derived from human FZD7. AA range:45-94
Mol wt	63620
Species reactivity	Human, Mouse
Clonality	Polyclonal
Recommended application	WB, IF, ELISA
Concentration	1 mg/ml
Full name	Frizzled-7 Antibody
Synonyms	FZD7; Frizzled-7; Fz-7; hFz7; FzE3

This product is for research use only, not for use in human, therapeutic or diagnostic procedure.

Background

Members of the frizzled gene family encode 7-transmembrane domain proteins that are receptors for Wnt signaling proteins. Frizzled-7 contains an N-terminal signal sequence, 10 cysteine residues typical of the cysteine-rich extracellular domain of Fz family members, 7 putative transmembrane domains, and an intracellular C-terminal tail with a PDZ domain-binding motif. FZD7 expression may downregulate APC function and enhance beta-catenin-mediated signals in poorly differentiated human esophageal carcinomas.

Recommended Dilution

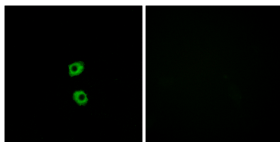
WB: 1: 500 - 1: 2000

IF: 1: 200 - 1: 1000

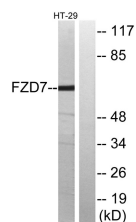
ELISA: 1: 20000

Not yet tested in other applications.

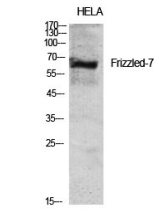
Images



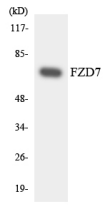
Immunofluorescence analysis of MCF7 cells, using FZD7 Antibody. The picture on the right is blocked with the synthesized peptide.



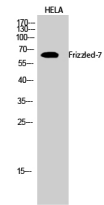
Western blot analysis of lysates from HT-29 cells, using FZD7 Antibody. The lane on the right is blocked with the synthesized peptide.



Western Blot analysis of various cells using Frizzled-7 Polyclonal Antibody diluted at 1:2000



Western blot analysis of the lysates from HUVEC cells using FZD7 antibody.



Western Blot analysis of HELA cells using Frizzled-7 Polyclonal Antibody diluted at 1:2000

Storage

-20°C for one year

501 Changsheng S Rd, Nanhu Dist, Jiaxing, Zhejiang, China

Tel: 86 21 31007137 | E-mail: save@bt-laboratory.com | www.bt-laboratory.com