

Frizzled-8 Polyclonal Antibody

Description

Product type	Primary Antibody
Code	BT-AP03369
Host	Rabbit
Isotype	IgG
Size	20ul, 50ul, 100ul
Immunogen	The antiserum was produced against synthesized peptide derived from human FZD8. AA range:486-535
Mol wt	73300
Species reactivity	Human, Mouse, Rat
Clonality	Polyclonal
Recommended application	WB, IHC-p, ELISA
Concentration	1 mg/ml
Full name	Frizzled-8 Antibody
Synonyms	FZD8; Frizzled-8; Fz-8; hFz8

This product is for research use only, not for use in human, therapeutic or diagnostic procedure.

Background

This intronless gene FZD8 (frizzled class receptor 8) is a member of the frizzled gene family. Members of this family encode seven-transmembrane domain proteins that are receptors for the Wingless type MMTV integration site family of signaling proteins. Most frizzled receptors are coupled to the beta-catenin canonical signaling pathway. FZD8 is highly expressed in two human cancer cell lines, indicating that it may play a role in several types of cancer. The crystal structure of the extracellular cysteine-rich domain of a similar mouse protein has been determined.

Recommended Dilution

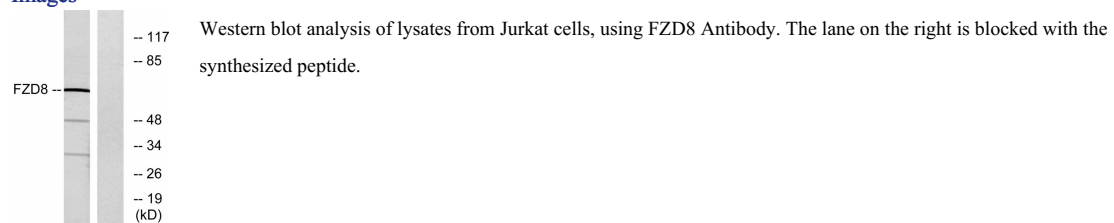
WB: 1: 500 - 1: 2000

IHC: 1: 100 - 1: 300

ELISA: 1: 5000

Not yet tested in other applications.

Images



Storage

-20°C for one year