

## Frizzled-9 Polyclonal Antibody

### Description

<b>Product type</b>	Primary Antibody
<b>Code</b>	BT-AP03371
<b>Host</b>	Rabbit
<b>Isotype</b>	IgG
<b>Size</b>	20ul, 50ul, 100ul
<b>Immunogen</b>	The antiserum was produced against synthesized peptide derived from human FZD9. AA range:542-591
<b>Mol wt</b>	64466
<b>Species reactivity</b>	Human, Mouse, Monkey
<b>Clonality</b>	Polyclonal
<b>Recommended application</b>	WB, IF, ELISA
<b>Concentration</b>	1 mg/ml
<b>Full name</b>	Frizzled-9 Antibody
<b>Synonyms</b>	FZD9; FZD3; Frizzled-9; Fz-9; hFz9; FzE6; CD antigen CD349

**This product is for research use only, not for use in human, therapeutic or diagnostic procedure.**

### Background

Members of the frizzled gene family encode 7-transmembrane domain proteins that are receptors for Wnt signaling proteins. The FZD9 gene is located within the Williams syndrome common deletion region of chromosome 7, and heterozygous deletion of the FZD9 gene may contribute to the Williams syndrome phenotype. Frizzled-9 is expressed predominantly in brain, testis, eye, skeletal muscle, and kidney.

### Recommended Dilution

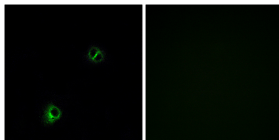
WB: 1: 500 - 1: 2000

IF: 1: 200 - 1: 1000

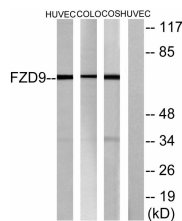
ELISA: 1: 20000

Not yet tested in other applications.

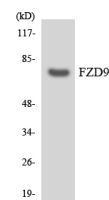
### Images



Immunofluorescence analysis of A549 cells, using FZD9 Antibody. The picture on the right is blocked with the synthesized peptide.



Western blot analysis of lysates from HUVEC, COLO, and COS cells, using FZD9 Antibody. The lane on the right is blocked with the synthesized peptide.



Western blot analysis of the lysates from Jurkat cells using FZD9 antibody.



## Western Blot analysis of various cells using Frizzled-9 Polyclonal Antibody

### Storage

-20°C for one year

501 Changsheng S Rd, Nanhu Dist, Jiaxing, Zhejiang, China

Tel: 86 21 31007137 | E-mail: [save@bt-laboratory.com](mailto:save@bt-laboratory.com) | [www.bt-laboratory.com](http://www.bt-laboratory.com)