

Frizzled-9 Polyclonal Antibody

Description

Product type	Primary Antibody
Code	BT-AP03372
Host	Rabbit
Isotype	IgG
Size	20ul, 50ul, 100ul
Immunogen	Synthetic peptide from human protein at AA range: 1-50
Mol wt	73300
Species reactivity	Human, Mouse, Rat
Clonality	Polyclonal
Recommended application	IHC-p, ELISA
Concentration	1 mg/ml
Full name	Frizzled-9 Antibody
Synonyms	Frizzled-9 (Fz-9) (hFz9) (FzE6) (CD antigen CD349)

This product is for research use only, not for use in human, therapeutic or diagnostic procedure.

Background

This intronless gene FZD8 (frizzled class receptor 8) is a member of the frizzled gene family. Members of this family encode seven-transmembrane domain proteins that are receptors for the Wingless type MMTV integration site family of signaling proteins. Most frizzled receptors are coupled to the beta-catenin canonical signaling pathway. FZD8 is highly expressed in two human cancer cell lines, indicating that it may play a role in several types of cancer. The crystal structure of the extracellular cysteine-rich domain of a similar mouse protein has been determined.

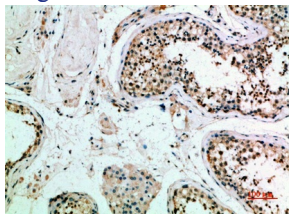
Recommended Dilution

IHC-p: 1: 50 - 200

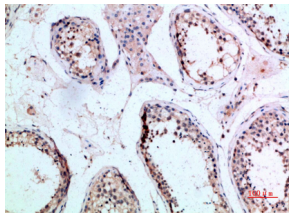
ELISA: 1: 10000 - 20000

Not yet tested in other applications.

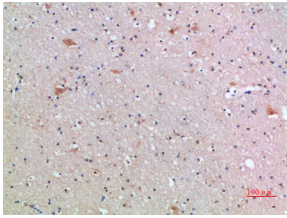
Images



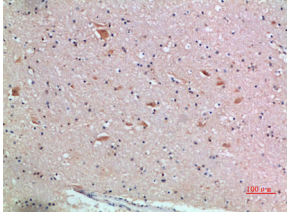
Immunohistochemical analysis of paraffin-embedded human-testis, antibody was diluted at 1:200



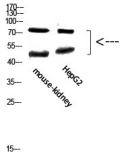
Immunohistochemical analysis of paraffin-embedded human-testis, antibody was diluted at 1:200



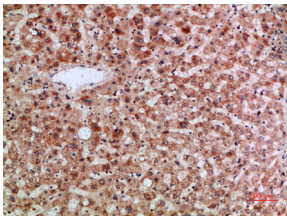
Immunohistochemical analysis of paraffin-embedded human-brain, antibody was diluted at 1:200



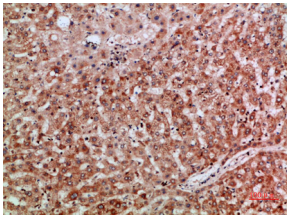
Immunohistochemical analysis of paraffin-embedded human-brain, antibody was diluted at 1:200



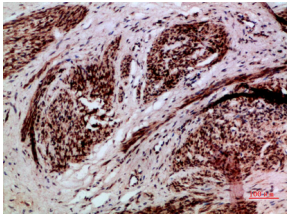
Western Blot analysis of mouse-kidney, hepg2 cells using Antibody diluted at 800. Secondary antibody was diluted at 1:20000



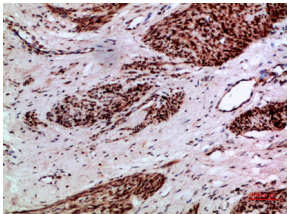
Immunohistochemical analysis of paraffin-embedded human-liver, antibody was diluted at 1:200



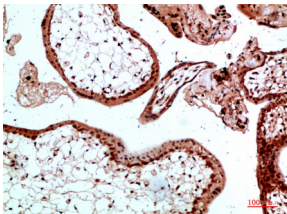
Immunohistochemical analysis of paraffin-embedded human-liver, antibody was diluted at 1:200



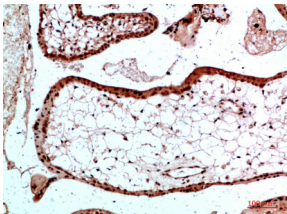
Immunohistochemical analysis of paraffin-embedded human-cervical-cancer, antibody was diluted at 1:200



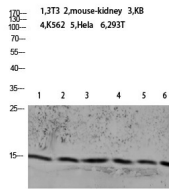
Immunohistochemical analysis of paraffin-embedded human-cervical-cancer, antibody was diluted at 1:200



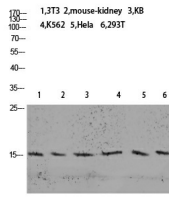
Immunohistochemical analysis of paraffin-embedded human-placenta, antibody was diluted at 1:200



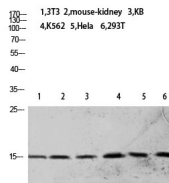
Immunohistochemical analysis of paraffin-embedded human-placenta, antibody was diluted at 1:200



Western blot analysis of 3T3 mouse-kidney KB K562 HeLa 293T lysate, antibody was diluted at 2000.
Secondary antibody was diluted at 1:20000 cells nucleus.



Western blot analysis of 3T3 mouse-kidney KB K562 HeLa 293T lysate, antibody was diluted at 2000.
Secondary antibody was diluted at 1:20000 cells nucleus.



Western blot analysis of 293T HeLa VEC KB mouse-kidney 3T3 lysate, antibody was diluted at 2000.
Secondary antibody was diluted at 1:20000 cells nucleus.

Storage

-20°C for one year

501 Changsheng S Rd, Nanhu Dist, Jiaxing, Zhejiang, China

Tel: 86 21 31007137 | E-mail: save@bt-laboratory.com | www.bt-laboratory.com