

FSHR Polyclonal Antibody

Description

Product type	Primary Antibody
Code	BT-AP03379
Host	Rabbit
Isotype	IgG
Size	20ul, 50ul, 100ul
Immunogen	The antiserum was produced against synthesized peptide derived from human FSHR. AA range:278-327
Mol wt	78295
Species reactivity	Human
Clonality	Polyclonal
Recommended application	WB, IF, ELISA
Concentration	1 mg/ml
Full name	FSHR Antibody
Synonyms	FSHR; LGRI; Follicle-stimulating hormone receptor; FSH-R; Follitropin receptor

This product is for research use only, not for use in human, therapeutic or diagnostic procedure.

Background

Follicle-stimulating hormone receptor encoded by FSHR belongs to family 1 of G-protein coupled receptors. It is the receptor for follicle stimulating hormone and functions in gonad development. Mutations in this gene cause ovarian dysgenesis type 1, and also ovarian hyperstimulation syndrome. Alternative splicing results in multiple transcript variants.

Recommended Dilution

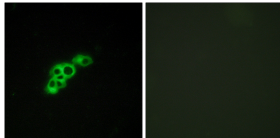
WB: 1: 500 - 1: 2000

IF: 1: 200 - 1: 1000

ELISA: 1: 5000

Not yet tested in other applications.

Images



Immunofluorescence analysis of MCF7 cells, using FSHR Antibody. The picture on the right is blocked with the synthesized peptide.

Storage

-20°C for one year