

Fucokinase Polyclonal Antibody

Description

Product type	Primary Antibody
Code	BT-AP03384
Host	Rabbit
Isotype	IgG
Size	20ul, 50ul, 100ul
Immunogen	The antiserum was produced against synthesized peptide derived from human FUK. AA range:11-60
Mol wt	117623
Species reactivity	Human, Mouse, Monkey
Clonality	Polyclonal
Recommended application	WB, IF, ELISA
Concentration	1 mg/ml
Full name	Fucokinase Antibody
Synonyms	FUK; L-fucose kinase; Fucokinase

This product is for research use only, not for use in human, therapeutic or diagnostic procedure.

Background

L-fucose kinase encoded by FUK belongs to the GHMP (galacto-, homoserine, mevalonate and phosphomevalonate) kinase family and catalyzes the phosphorylation of L-fucose to form beta-L-fucose 1-phosphate. L-fucose kinase catalyzes the first step in the utilization of free L-fucose in glycoprotein and glycolipid synthesis. L-fucose may be important in mediating a number of cell-cell interactions such as blood group antigen recognition, inflammation, and metastasis. While several transcript variants may exist for this gene, the full-length nature of only one has been described to date.

Recommended Dilution

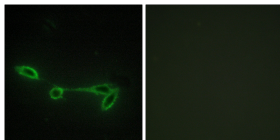
WB: 1: 500 - 1: 2000

IF: 1: 200 - 1: 1000

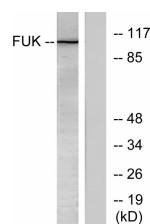
ELISA: 1: 20000

Not yet tested in other applications.

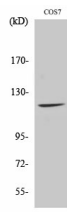
Images



Immunofluorescence analysis of NIH/3T3 cells, using FUK Antibody. The picture on the right is blocked with the synthesized peptide.



Western blot analysis of lysates from COS7 cells, treated with insulin 0.01U/ml 45', using FUK Antibody. The lane on the right is blocked with the synthesized peptide.



Western Blot analysis of various cells using Fucokinase Polyclonal Antibody

Storage

-20°C for one year

501 Changsheng S Rd, Nanhu Dist, Jiaxing, Zhejiang, China

Tel: 86 21 31007137 | E-mail: save@bt-laboratory.com | www.bt-laboratory.com