

FUNDC1 Polyclonal Antibody

Description

Product type	Primary Antibody
Code	BT-AP03386
Host	Rabbit
Isotype	IgG
Size	20ul, 50ul, 100ul
Immunogen	The antiserum was produced against synthesized peptide derived from the N-terminal region of human FUNDC1. AA range:1-50
Mol wt	17178
Species reactivity	Human, Mouse, Rat
Clonality	Polyclonal
Recommended application	WB, ELISA
Concentration	1 mg/ml
Full name	FUNDC1 Antibody
Synonyms	FUNDC1; FUN14 domain-containing protein 1

This product is for research use only, not for use in human, therapeutic or diagnostic procedure.

Background

FUNDC1 encodes a protein with a FUN14 superfamily domain. The function of the encoded protein is not known.

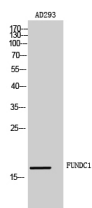
Recommended Dilution

WB: 1: 500 - 1: 2000

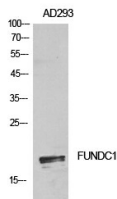
ELISA: 1: 10000

Not yet tested in other applications.

Images



Western Blot analysis of AD293 cells using FUNDC1 Polyclonal Antibody diluted at 1:500. Secondary antibody was diluted at 1:20000



Western Blot analysis of AD293 cells using FUNDC1 Polyclonal Antibody. Antibody was diluted at 1:500. Secondary antibody was diluted at 1:20000

Storage

-20°C for one year