

G2A Polyclonal Antibody

Description

Product type	Primary Antibody
Code	BT-AP03400
Host	Rabbit
Isotype	IgG
Size	20ul, 50ul, 100ul
Immunogen	The antiserum was produced against synthesized peptide derived from human GPR132. AA range:293-342
Mol wt	42499
Species reactivity	Human, Mouse, Monkey
Clonality	Polyclonal
Recommended application	WB, IF, ELISA
Concentration	1 mg/ml
Full name	G2A Antibody
Synonyms	GPR132; G2A; Probable G-protein coupled receptor 132; G2 accumulation protein

This product is for research use only, not for use in human, therapeutic or diagnostic procedure.

Background

GPR132 encodes a member of the guanine nucleotide-binding protein (G protein)-coupled receptor (GPCR) superfamily. The receptors are seven-pass transmembrane proteins that respond to extracellular cues and activate intracellular signal transduction pathways. Probable G-protein coupled receptor 132 was reported to be a receptor for lysophosphatidylcholine action, but PubMedID: 15653487 retracts this finding and instead suggests this protein to be an effector of lysophosphatidylcholine action. Probable G-protein coupled receptor 132 may have proton-sensing activity and may be a receptor for oxidized free fatty acids. Alternative splicing results in multiple transcript variants.

Recommended Dilution

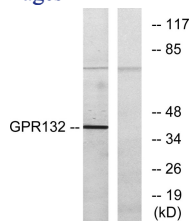
WB: 1: 500 - 1: 2000

IF: 1: 200 - 1: 1000

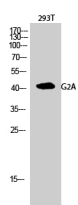
ELISA: 1: 5000

Not yet tested in other applications.

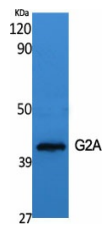
Images



Western blot analysis of lysates from COS7 cells, using GPR132 Antibody. The lane on the right is blocked with the synthesized peptide.



Western Blot analysis of 293T cells using G2A Polyclonal Antibody diluted at 1:500



Western Blot analysis of various cells using G2A Polyclonal Antibody diluted at 1:500

Storage

-20°C for one year

501 Changsheng S Rd, Nanhu Dist, Jiaxing, Zhejiang, China

Tel: 86 21 31007137 | E-mail: save@bt-laboratory.com | www.bt-laboratory.com