

G3BP2 Polyclonal Antibody

Description

Product type	Primary Antibody
Code	BT-AP03402
Host	Rabbit
Isotype	IgG
Size	20ul, 50ul, 100ul
Immunogen	The antiserum was produced against synthesized peptide derived from human G3BP2. AA range:433-482
Mol wt	54121
Species reactivity	Human, Mouse
Clonality	Polyclonal
Recommended application	WB, ELISA
Concentration	1 mg/ml
Full name	G3BP2 Antibody
Synonyms	G3BP2; KIAA0660; Ras GTPase-activating protein-binding protein 2; G3BP-2; GAP SH3 domain-binding protein 2

This product is for research use only, not for use in human, therapeutic or diagnostic procedure.

Background

Ras GTPase-activating protein-binding protein 2 is an enzyme that in humans is encoded by the G3BP2 gene, probable scaffold protein that may be involved in mRNA transport. G3BP2 has been shown to interact with I κ B α . Among its related pathways are TNF-alpha/NF-kB Signaling Pathway. Gene Ontology (GO) annotations related to this gene include nucleic acid binding and nucleotide binding. An important paralog of this gene is G3BP1.

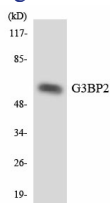
Recommended Dilution

WB: 1: 500 - 1: 2000

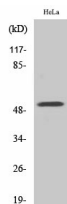
ELISA: 1: 10000

Not yet tested in other applications.

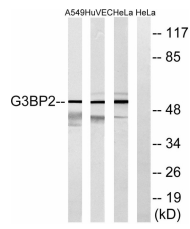
Images



Western blot analysis of the lysates from HeLa cells using G3BP2 antibody.



Western Blot analysis of various cells using G3BP2 Polyclonal Antibody



Western blot analysis of lysates from HeLa, HUVEC, and A549 cells, using G3BP2 Antibody. The lane on the right is blocked with the synthesized peptide.

Storage

-20°C for one year

501 Changsheng S Rd, Nanhu Dist, Jiaxing, Zhejiang, China

Tel: 86 21 31007137 | E-mail: save@bt-laboratory.com | www.bt-laboratory.com