

LFTY2 Rabbit Polyclonal Antibody

Description

Product type	Primary Antibody
Code	BT-AP03403
Host	Rabbit
Isotype	IgG
Size	100ul, 50ul, 20ul
Immunogen	Synthesized peptide derived from human LFTY2
Mol wt	40260
Species reactivity	Human, Mouse
Clonality	Polyclonal
Recommended application	WB
Concentration	1 mg/ml
Full name	LFTY2
Synonyms	LFTY2

This product is for research use only, not for use in human, therapeutic or diagnostic procedure.

Background

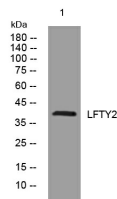
This gene encodes a secreted ligand of the TGF-beta (transforming growth factor-beta) superfamily of proteins. Ligands of this family bind various TGF-beta receptors leading to recruitment and activation of SMAD family transcription factors that regulate gene expression. The encoded preproprotein is proteolytically processed to generate the mature protein| which plays a role in left-right asymmetry determination of organ systems during development. The protein may also play a role in endometrial bleeding. Mutations in this gene have been associated with left-right axis malformations| particularly in the heart and lungs. Some types of infertility have been associated with dysregulated expression of this gene in the endometrium. This gene is closely linked to both a related family member and a related pseudogene. This gene encodes multiple isoforms that may undergo similar proteolytic processing.

Recommended Dilution

WB: 1: 500 - 1: 2000

Not yet tested in other applications.

Images



Western blot analysis of lysates from HpeG2 cells, primary antibody was diluted at 1:1000, 4°C overnight

Storage

-20°C for 1 year