

## Gab 2 Polyclonal Antibody

### Description

<b>Product type</b>	Primary Antibody
<b>Code</b>	BT-AP03411
<b>Host</b>	Rabbit
<b>Isotype</b>	IgG
<b>Size</b>	20ul, 50ul, 100ul
<b>Immunogen</b>	The antiserum was produced against synthesized peptide derived from human Gab2. AA range:125-174
<b>Mol wt</b>	74458
<b>Species reactivity</b>	Human, Mouse, Rat, Monkey
<b>Clonality</b>	Polyclonal
<b>Recommended application</b>	WB, IHC-p, ELISA
<b>Concentration</b>	1 mg/ml
<b>Full name</b>	Gab 2 Antibody
<b>Synonyms</b>	GAB2; KIAA0571; GRB2-associated-binding protein 2; GRB2-associated binder 2; Growth factor receptor bound protein 2-associated protein 2; pp100

**This product is for research use only, not for use in human, therapeutic or diagnostic procedure.**

### Background

GAB2 (GRB2 associated binding protein 2) is a member of the GRB2-associated binding protein (GAB) gene family. These proteins contain pleckstrin homology (PH) domain, and bind SHP2 tyrosine phosphatase and GRB2 adapter protein. They act as adapters for transmitting various signals in response to stimuli through cytokine and growth factor receptors, and T- and B-cell antigen receptors. The protein encoded by GAB2 is the principal activator of phosphatidylinositol-3 kinase in response to activation of the high affinity IgE receptor. Two alternatively spliced transcripts encoding different isoforms have been described for GAB2.

### Recommended Dilution

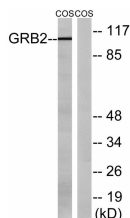
WB: 1: 500 - 1: 2000

IHC: 1: 100 - 1: 300

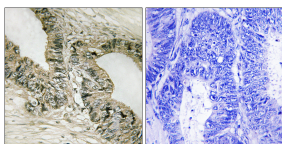
ELISA: 1: 40000

Not yet tested in other applications.

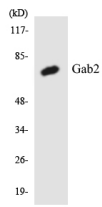
### Images



Western blot analysis of lysates from COS cells, using Gab2 Antibody. The lane on the right is blocked with the synthesized peptide.



Immunohistochemistry analysis of paraffin-embedded human colon carcinoma tissue, using Gab2 Antibody. The picture on the right is blocked with the synthesized peptide.



Western blot analysis of the lysates from HT-29 cells using Gab2 antibody.

### Storage

-20°C for one year

501 Changsheng S Rd, Nanhu Dist, Jiaxing, Zhejiang, China

Tel: 86 21 31007137 | E-mail: [save@bt-laboratory.com](mailto:save@bt-laboratory.com) | [www.bt-laboratory.com](http://www.bt-laboratory.com)