

Gab 2/4 Polyclonal Antibody

Description

Product type	Primary Antibody
Code	BT-AP03413
Host	Rabbit
Isotype	IgG
Size	20ul, 50ul, 100ul
Immunogen	The antiserum was produced against synthesized peptide derived from human GAB2. AA range:21-70
Mol wt	62367/74458
Species reactivity	Human
Clonality	Polyclonal
Recommended application	WB, IHC-p, ELISA
Concentration	1 mg/ml
Full name	Gab 2/4 Antibody
Synonyms	GAB4; GRB2-associated-binding protein 4; GRB2-associated binder 2-like; GAB2-like; GRB2-associated binder 4; GRB2-associated-binding protein 2-like; Growth factor receptor bound protein 2-associated p

This product is for research use only, not for use in human, therapeutic or diagnostic procedure.

Background

This gene encodes beta-2-adrenergic receptor which is a member of the G protein-coupled receptor superfamily. This receptor is directly associated with one of its ultimate effectors, the class C L-type calcium channel Ca(V)1. This receptor-channel complex also contains a G protein, an adenylyl cyclase, cAMP-dependent kinase, and the counterbalancing phosphatase, PP2A. The assembly of the signaling complex provides a mechanism that ensures specific and rapid signaling by this G protein-coupled receptor. This gene is intronless. Different polymorphic forms, point mutations, and/or downregulation of this gene are associated with nocturnal asthma, obesity and type 2 diabetes. [provided by RefSeq, Jul 2008]ADRB2 (Adrenoceptor Beta 2) is a Protein Coding gene. Diseases associated with ADRB2 include obesity and asthma. Among its related pathways are Signaling by GPCR and cAMP signaling pathway. GO annotations related to this gene include G-protein coupled receptor activity and enzyme binding. An important paralog of this gene is TAAR9. eta-adrenergic receptors mediate the catecholamine-induced activation of adenylate cyclase through the action of G proteins. The beta-2-adrenergic receptor binds epinephrine with an approximately 30-fold greater affinity than it does norepinephrine. he adrenergic beta2 receptor (beta2-adrenoceptor) is a member of the adrenergic receptor group of G-protein-coupled receptors that also includes alpha1A, alpha1B, alpha1D, alpha2A, alpha2B, alpha2C, beta1 and beta3. They are located primarily in the CNS, heart, kidney and muscle.

Recommended Dilution

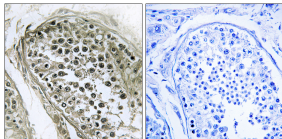
WB: 1: 500 - 1: 2000

IHC: 1: 100 - 1: 300

ELISA: 1: 40000

Not yet tested in other applications.

Images



Immunohistochemistry analysis of paraffin-embedded human tesophagusis, using GAB4 Antibody. The picture on the right is blocked with the synthesized peptide.

Storage

-20°C for one year

501 Changsheng S Rd, Nanhu Dist, Jiaxing, Zhejiang, China

Tel: 86 21 31007137 | E-mail: save@bt-laboratory.com | www.bt-laboratory.com