

## LIPG Rabbit Polyclonal Antibody

### Description

Product type	Primary Antibody
Code	BT-AP03414
Host	Rabbit
Isotype	IgG
Size	100ul, 50ul, 20ul
Immunogen	Synthesized peptide derived from human LIPG
Mol wt	43780
Species reactivity	Human, Mouse, Rat
Clonality	Polyclonal
Recommended application	WB
Concentration	1 mg/ml
Full name	LIPG
Synonyms	LIPG

This product is for research use only, not for use in human, therapeutic or diagnostic procedure.

### Background

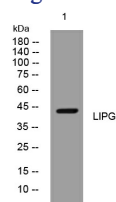
This gene encodes gastric lipase| an enzyme involved in the digestion of dietary triglycerides in the gastrointestinal tract| and responsible for 30% of fat digestion processes occurring in human. It is secreted by gastric chief cells in the fundic mucosa of the stomach| and it hydrolyzes the ester bonds of triglycerides under acidic pH conditions. The gene is a member of a conserved gene family of lipases that play distinct roles in neutral lipid metabolism. Several transcript variants encoding different isoforms have been found for this gene.

### Recommended Dilution

WB: 1: 500 - 1: 2000

Not yet tested in other applications.

### Images



Western blot analysis of lysates from HEK293 cells, primary antibody was diluted at 1:1000, 4°C overnight

### Storage

-20°C for 1 year