

GABA T-1 Polyclonal Antibody

Description

Product type	Primary Antibody
Code	BT-AP03420
Host	Rabbit
Isotype	IgG
Size	20ul, 50ul, 100ul
Immunogen	The antiserum was produced against synthesized peptide derived from human SLC6A1. AA range:381-430
Mol wt	67015
Species reactivity	Human, Mouse, Rat
Clonality	Polyclonal
Recommended application	WB, ELISA
Concentration	1 mg/ml
Full name	GABA T-1 Antibody
Synonyms	SLC6A1; GABATR; GABT1; GAT1; Sodium- and chloride-dependent GABA transporter 1; GAT-1; Solute carrier family 6 member 1

This product is for research use only, not for use in human, therapeutic or diagnostic procedure.

Background

SLC6A1 (Solute Carrier Family 6 Member 1) is a Protein Coding gene. Diseases associated with SLC6A1 include myoclonic-atonic epilepsy and myoclonic-astatic epilepsy. Among its related pathways are Circadian entrainment and Benzodiazepine Pathway, Pharmacodynamics. GO annotations related to this gene include neurotransmitter: sodium symporter activity and gamma-aminobutyric acid: sodium symporter activity. An important paralog of this gene is SLC6A4.

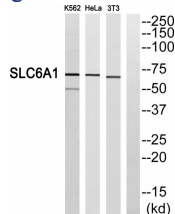
Recommended Dilution

WB: 1: 500 - 1: 2000

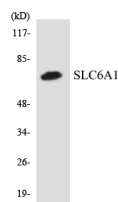
ELISA: 1: 40000

Not yet tested in other applications.

Images



Western blot analysis of SLC6A1 Antibody. The lane on the right is blocked with the SLC6A1 peptide.



Western blot analysis of the lysates from HeLa cells using SLC6A1 antibody.

Storage

-20°C for one year

501 Changsheng S Rd, Nanhu Dist, Jiaxing, Zhejiang, China

Tel: 86 21 31007137 | E-mail: save@bt-laboratory.com | www.bt-laboratory.com