

## LMA2L Rabbit Polyclonal Antibody

### Description

<b>Product type</b>	Primary Antibody
<b>Code</b>	BT-AP03423
<b>Host</b>	Rabbit
<b>Isotype</b>	IgG
<b>Size</b>	100ul, 50ul, 20ul
<b>Immunogen</b>	Synthesized peptide derived from human LMA2L
<b>Mol wt</b>	38280
<b>Species reactivity</b>	Human, Mouse
<b>Clonality</b>	Polyclonal
<b>Recommended application</b>	WB
<b>Concentration</b>	1 mg/ml
<b>Full name</b>	LMA2L
<b>Synonyms</b>	LMA2L

This product is for research use only, not for use in human, therapeutic or diagnostic procedure.

### Background

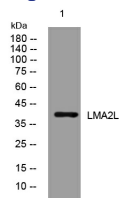
This gene encodes a protein belonging to the L-type lectin group of type 1 membrane proteins| which function in the mammalian early secretory pathway. These proteins contain luminal carbohydrate recognition domains| which display homology to leguminous lectins. Unlike other proteins of the group| which cycle in the early secretory pathway and are predominantly associated with post endoplasmic reticulum membranes| the protein encoded by this gene is a non-cycling resident protein of the ER| where it functions as a cargo receptor for glycoproteins. It is proposed to regulate exchange of folded proteins for transport to the Golgi and exchange of misfolded glycoproteins for transport to the ubiquitin-proteasome pathway.

### Recommended Dilution

WB: 1: 500 - 1: 2000

Not yet tested in other applications.

### Images



Western blot analysis of lysates from THP-1 cells, primary antibody was diluted at 1:1000, 4°C overnight

### Storage

-20°C for 1 year