

## GABAA R Alpha6 Polyclonal Antibody

### Description

<b>Product type</b>	Primary Antibody
<b>Code</b>	BT-AP03427
<b>Host</b>	Rabbit
<b>Isotype</b>	IgG
<b>Size</b>	20ul, 50ul, 100ul
<b>Immunogen</b>	The antiserum was produced against synthesized peptide derived from human GABRA6. AA range:61-110
<b>Mol wt</b>	51024
<b>Species reactivity</b>	Human, Mouse, Rat
<b>Clonality</b>	Polyclonal
<b>Recommended application</b>	WB, ELISA
<b>Concentration</b>	1 mg/ml
<b>Full name</b>	GABAA Ralpha6 Antibody
<b>Synonyms</b>	GABRA6; Gamma-aminobutyric acid receptor subunit alpha-6; GABA(A) receptor subunit alpha-6

This product is for research use only, not for use in human, therapeutic or diagnostic procedure.

### Background

GABA is the major inhibitory neurotransmitter in the mammalian brain where it acts at GABA-A receptors, which are ligand-gated chloride channels. Chloride conductance of these channels can be modulated by agents such as benzodiazepines that bind to the GABA-A receptor. At least 16 distinct subunits of GABA-A receptors have been identified.

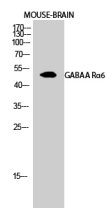
### Recommended Dilution

WB: 1: 500 - 1: 2000

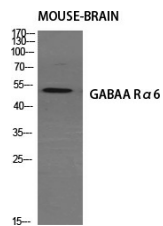
ELISA: 1: 40000

Not yet tested in other applications.

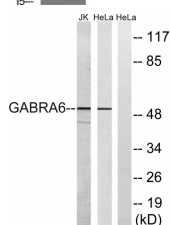
### Images



Western Blot analysis of MOUSE-BRAIN cells using GABAA Ra6 Polyclonal Antibody diluted at 1:500



Western Blot analysis of various cells using GABAA Ra6 Polyclonal Antibody diluted at 1:500



Western blot analysis of lysates from HeLa and Jurkat cells, using GABRA6 Antibody. The lane on the right is blocked with the synthesized peptide.

## Storage

-20°C for one year

501 Changsheng S Rd, Nanhu Dist, Jiaxing, Zhejiang, China

Tel: 86 21 31007137 | E-mail: [save@bt-laboratory.com](mailto:save@bt-laboratory.com) | [www.bt-laboratory.com](http://www.bt-laboratory.com)