

GABAA R Beta2 Polyclonal Antibody

Description

Product type	Primary Antibody
Code	BT-AP03429
Host	Rabbit
Isotype	IgG
Size	20ul, 50ul, 100ul
Immunogen	The antiserum was produced against synthesized peptide derived from human GABAA Rbeta2. AA range:382-431
Mol wt	54606
Species reactivity	Human, Mouse, Rat
Clonality	Polyclonal
Recommended application	IHC-p, ELISA
Concentration	1 mg/ml
Full name	GABAA Rbeta2 Antibody
Synonyms	GABRB2; Gamma-aminobutyric acid receptor subunit beta-2; GABA(A) receptor subunit beta-2

This product is for research use only, not for use in human, therapeutic or diagnostic procedure.

Background

The gamma-aminobutyric acid (GABA) A receptor is a multisubunit chloride channel that mediates the fastest inhibitory synaptic transmission in the central nervous system. GABRB2 encodes GABA A receptor, beta 2 subunit. It is mapped to chromosome 5q34 in a cluster comprised of genes encoding alpha 1 and gamma 2 subunits of the GABA A receptor. Alternative splicing of this gene generates 2 transcript variants, differing by a 114 bp insertion.

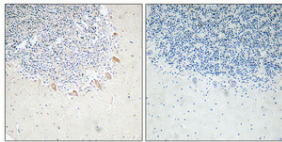
Recommended Dilution

IHC: 1: 100 - 1: 300

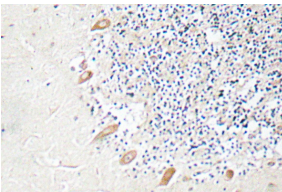
ELISA: 1: 10000

Not yet tested in other applications.

Images



Immunohistochemical analysis of paraffin-embedded Human brain. Antibody was diluted at 1:100(4° overnight). High-pressure and temperature Tris-EDTA,pH8.0 was used for antigen retrieval. Negative contrl (right) obtained from antibody was pre-absorbed by immunogen peptide.



Immunohistochemistry analysis of GABAA Rβ2 antibody in paraffin-embedded human brain tissue.

Storage

-20°C for one year

