

GABAA R Delta Polyclonal Antibody

Description

Product type	Primary Antibody
Code	BT-AP03431
Host	Rabbit
Isotype	IgG
Size	20ul, 50ul, 100ul
Immunogen	The antiserum was produced against synthesized peptide derived from human GABRD. AA range:141-190
Mol wt	50708
Species reactivity	Human, Mouse, Rat
Clonality	Polyclonal
Recommended application	WB, IHC-p, ELISA
Concentration	1 mg/ml
Full name	GABAA Rdelta Antibody
Synonyms	GABRD; Gamma-aminobutyric acid receptor subunit delta; GABA(A) receptor subunit delta

This product is for research use only, not for use in human, therapeutic or diagnostic procedure.

Background

Gamma-aminobutyric acid (GABA) is the major inhibitory neurotransmitter in the mammalian brain where it acts at GABA-A receptors, which are ligand-gated chloride channels. Chloride conductance of these channels can be modulated by agents such as benzodiazepines that bind to the GABA-A receptor. The GABA-A receptor is generally pentameric and there are five types of subunits: alpha, beta, gamma, delta, and rho. GABRD encodes the delta subunit. Mutations in this gene have been associated with susceptibility to generalized epilepsy with febrile seizures, type 5. Alternatively spliced transcript variants have been described for this gene, but their biological validity has not been determined.

Recommended Dilution

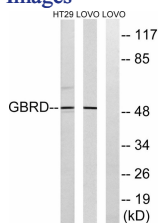
WB: 1: 500 - 1: 2000

IHC: 1: 100 - 1: 300

ELISA: 1: 10000

Not yet tested in other applications.

Images



Western blot analysis of lysates from LOVO and HT-29 cells, using GABRD Antibody. The lane on the right is blocked with the synthesized peptide.

Storage

-20°C for one year