

Gads Polyclonal Antibody

Description

Product type	Primary Antibody
Code	BT-AP03441
Host	Rabbit
Isotype	IgG
Size	20ul, 50ul, 100ul
Immunogen	The antiserum was produced against synthesized peptide derived from human GRAP2. AA range:121-170
Mol wt	37909
Species reactivity	Human
Clonality	Polyclonal
Recommended application	WB, ELISA
Concentration	1 mg/ml
Full name	Gads Antibody
Synonyms	GRAP2; GADS; GRB2L; GRID; GRB2-related adaptor protein 2; Adapter protein GRID; GRB-2-like protein; GRB2L; GRBLG; GRBX; Grf40 adaptor protein; Grf-40; Growth factor receptor-binding protein; Hematopoi

This product is for research use only, not for use in human, therapeutic or diagnostic procedure.

Background

GRAP2 encodes a member of the GRB2/Sem5/Drk family. This member is an adaptor-like protein involved in leukocyte-specific protein-tyrosine kinase signaling. Like its related family member, GRB2-related adaptor protein (GRAP), this protein contains an SH2 domain flanked by two SH3 domains. GRB2-related adaptor protein 2 interacts with other proteins, such as GRB2-associated binding protein 1 (GAB1) and the SLP-76 leukocyte protein (LCP2), through its SH3 domains. Multiple alternatively spliced transcript variants encoding distinct isoforms have been found for this gene.

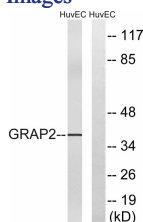
Recommended Dilution

WB: 1: 500 - 1: 2000

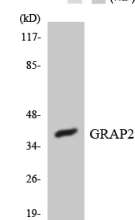
ELISA: 1: 40000

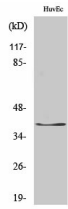
Not yet tested in other applications.

Images

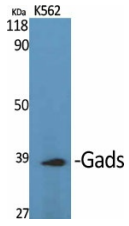


Western blot analysis of the lysates from HUVEC cells using GRAP2 antibody.





Western Blot analysis of HuvEc cells using Gads Polyclonal Antibody



Western Blot analysis of various cells using Gads Polyclonal Antibody

Storage

-20°C for one year

501 Changsheng S Rd, Nanhu Dist, Jiaxing, Zhejiang, China

Tel: 86 21 31007137 | E-mail: save@bt-laboratory.com | www.bt-laboratory.com