

Galactosidase Beta Polyclonal Antibody

Description

Product type	Primary Antibody
Code	BT-AP03445
Host	Rabbit
Isotype	IgG
Size	20ul, 50ul, 100ul
Immunogen	Synthesized peptide derived from the Internal region of human Galactosidase β .
Mol wt	76091
Species reactivity	Human
Clonality	Polyclonal
Recommended application	WB, IHC-p, ELISA
Concentration	1 mg/ml
Full name	Galactosidase beta Antibody
Synonyms	GLB1; ELNR1; Beta-galactosidase; Acid beta-galactosidase; Lactase; Elastin receptor 1

This product is for research use only, not for use in human, therapeutic or diagnostic procedure.

Background

GLB1 (galactosidase beta 1) encodes a member of the glycosyl hydrolase 35 family of proteins. Alternative splicing results in multiple transcript variants, at least one of which encodes a preproprotein that is proteolytically processed to generate the mature lysosomal enzyme. This enzyme catalyzes the hydrolysis of a terminal beta-linked galactose residue from ganglioside substrates and other glycoconjugates. Mutations in GLB1 may result in GM1-gangliosidosis and Morquio B syndrome.

Recommended Dilution

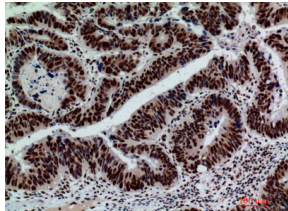
WB: 1: 500 - 1: 2000

IHC-p: 1: 100 - 1: 300

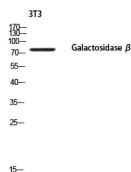
ELISA: 1: 10000

Not yet tested in other applications.

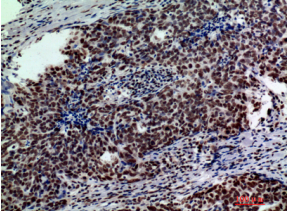
Images



Immunohistochemical analysis of paraffin-embedded human-colont-cancer, antibody was diluted at 1:200



Western blot analysis of 3T3 using Galactosidase β antibody. Secondary antibody was diluted at 1:20000



Immunohistochemical analysis of paraffin-embedded human-breast-cancer, antibody was diluted at 1:200

Storage

-20°C for one year

501 Changsheng S Rd, Nanhu Dist, Jiaxing, Zhejiang, China

Tel: 86 21 31007137 | E-mail: save@bt-laboratory.com | www.bt-laboratory.com